



Welcome to the LBC eNewsletter – March 2025

LBC eNewsletter content;

AGM – March 15 th 2025	(1)	Traffication	(7)
Frampton Marsh Walk - Report	(2)	Driven grouse shooting	(8)
“Wild Wrendale” visit	(3)	BlueSky and Website	(9)
Vine House Farm Tour	(4)	February 2025 Bird News	(10)
Mark Pearson Grimsby RSPB Talk	(5)		

Annual General Meeting (AGM)

Saturday March 15, 2025

All Lincolnshire Bird Club members will have received there AGM notice, for more details see;

<https://www.lincsbirdclub.co.uk/site/index.php/information/lbc-articlebloglist/759-lbc-agm-saturday-march-15-2025>

You are all cordially invites you to Whisby Nature Park Education Centre from 13.30hrs on Saturday March 15, 2025, for a talk by Conor Jameson at 14.00hrs on

"The Remarkable Life and Times of Naturalist, Author and Campaigner W.H. Hudson (1841-1922)"

The talk is free to everyone and will be followed by a brief break, then the Annual General Meeting (only paid up members allowed to speak and vote).

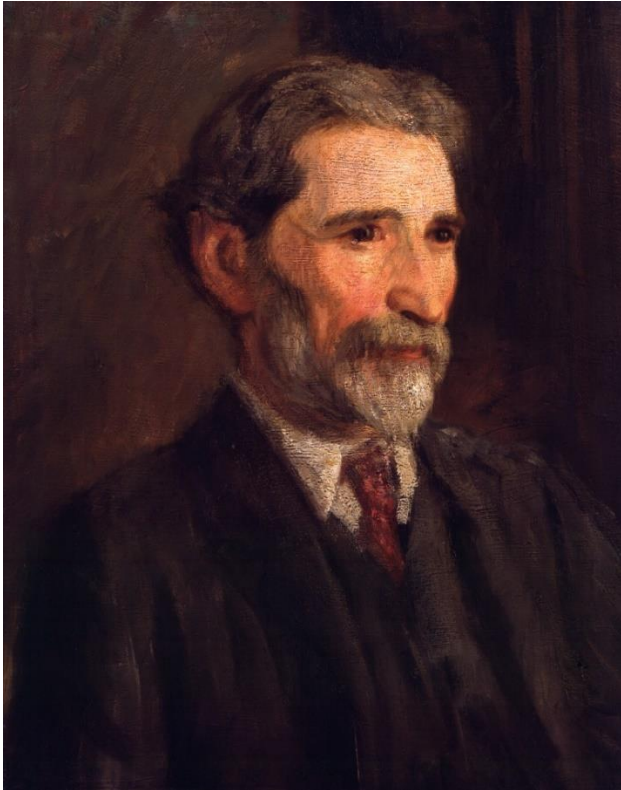
W.H. Hudson (1841–1922) was a naturalist, author, and campaigner best known for his writings on nature, ornithology, and rural life. Born William Henry Hudson in Argentina to English parents, he



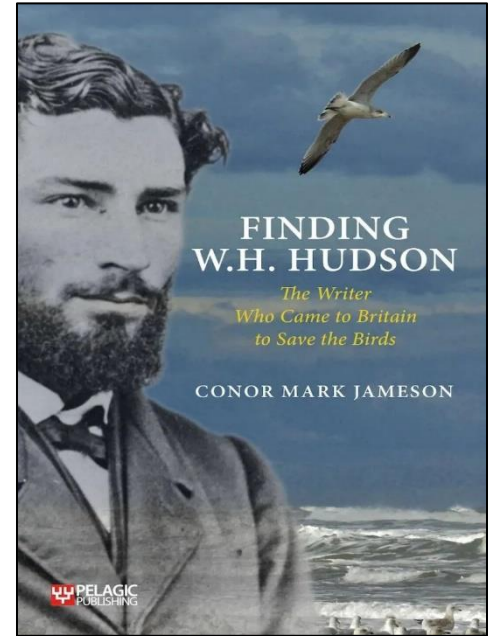
grew up on the pampas, where he developed a deep love for wildlife and an acute observational eye for birds and landscapes.

As a pioneering ornithologist, Hudson documented South American birdlife in works such as *Argentine Ornithology* (1888) and *The Naturalist in La Plata* (1892). After moving to England in 1874, he became a key figure in British natural history, contributing significantly to the study and conservation of birds.

Hudson was also a prolific writer, blending scientific observation with lyrical prose. His best-known books include *Far Away and Long Ago* (1918), a memoir of his Argentine childhood; *Green Mansions* (1904), a romantic



novel set in the South American rainforest; and *A Shepherd's Life* (1910), a celebrated account of rural England. His writings influenced literary figures such as Joseph Conrad and Ernest Hemingway.



In addition to his literary and scientific contributions, Hudson played a crucial role in early conservation efforts. As a founding member of the Royal Society for the Protection of Birds (RSPB), he campaigned against the hunting of birds for fashion and trade, advocating for greater legal protections for wildlife in Britain.

Hudson's works remain valued for their vivid descriptions of nature and their early contributions to environmental awareness. His legacy lives on in both literature and conservation, with the Hudson Memorial Bird Sanctuary in Hyde Park, London, dedicated in his honor.

Report on the Frampton Marsh Walk and Swan roost 01:02:2025

On the first of February eight Club members braved a very cold winter's afternoon to watch the waders, ducks and swans that spend the winter on the scrapes and reed beds at Frampton Marsh.

Setting off from the Visitor Centre we followed the main path round towards the Reed bed and 360 hides. Ducks seen on the water to our left included Teal, Wigeon, Shelduck, Pochard, Goldeneye and Gadwall. A pair of Mute Swans, Moorhens, Little Egret and a good number of Lapwing were also present, whilst a kestrel hovered overhead and a small flock of goldfinches flew across the path. A resting snipe close in caused some debate but was eventually identified as a common snipe. This was slightly disappointing as a Jack Snipe had apparently been in the same area during the morning.

On the opposite side of the path, foraging on the Marsh grassland a couple of Ruff and several Curlew were picked out amongst the numerous lapwings.

However, the highlight for me were the large number of Pintail seen from the 360 hide. These stunning ducks are amongst my favourite and to see so many was a great treat.

The supporting cast on the scrapes included Brent, Greylag and Canada Geese, a few Black-Tailed Godwit, Dunlin, a single Avocet and the resident Whooper Swan.

As we left the hide the first group of Whooper Swans came in from the surrounding fields

for a wash and drink before they settled to roost so we decided to return to the Visitor Centre rather than brave the sea bank. On the way back we saw the Peregrine sitting on the barn roof and, as we waited for the Swans, at least half a dozen Marsh Harriers were dropping into the reeds for the night. Finally, as the light faded regular groups of Whoopers began to arrive with their beautiful calls providing a fitting end to the afternoon.

Sally Prescott

FUTURE EVENTS

“WILD WRENDALE” Searby, Near Caistor Lincolnshire (Full address details provided to those booking)

SATURDAY 5 APRIL 10.0 – 12.0

A guided walk around this interesting farm project led by co-owner **Hannah Dale**. Hannah is a renowned wildlife artist whose work can be seen adorning many household items. Her husband Jack is a mechanical engineer and farmer who is passionate about Rewilding. In 2019 they decided to cease commercial food production on their unproductive arable farm and allow natural re-generation of the site, adding around five acres of ponds, and allowing scrub and natural grassland to return. A pair of beavers were introduced in 2023. The most recent survey has shown a significant increase in wildlife recorded with 94 bird species and 24 butterflies seen.

Further information about the farm can be obtained from the Wild Wendale website.

Meet in the farmyard. Toilets and tea/coffee facilities are available.

Please note that the terrain is uneven and can be slippery so is unsuitable for anyone with mobility issues.

To book a place please contact Sally Prescott. Numbers are limited to **15** places

<sally.prescott142@btinternet.com>

Telephone 01472 840142 and 07796 644380





“WILD WRENDALE” Searby, Near Caistor Lincolnshire A pair of beavers were introduced in 2023.

VINE HOUSE FARM TOUR - Saturday May 10

Led by Nicholas Watts, award winning farmer and wildlife champion.

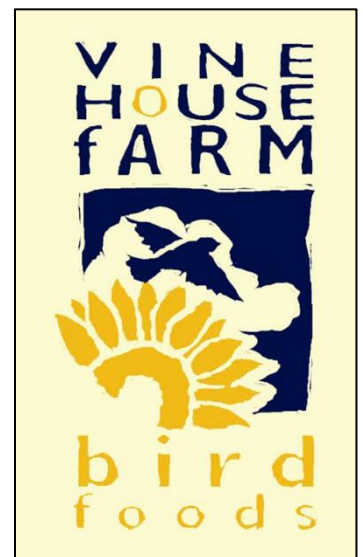
Meet at 8.00 at Vine House Farm, Deeping Fen Farm PE6 9PU for a bird watching tour around the Baston Fen area of the farm followed by a look round the bird seed operation for which the farm is well known.

Following this, the on site cafe will be open for refreshments if required at participant's personal expense.

There will be a **£5 per person** cost for the trip

As above please contact Sally Prescott to book

<sally.prescott142@btinternet.com> Telephone 01472 840142 and 07796 644380



Lincs Bird Club on the road again - this time to Northumberland

The proposed spring LBC holiday in the Scottish Highlands has, unfortunately, had to be called off. Although there is still plenty of room on the coach, there has been a 'squeeze' on bedrooms at the Duke of Gordon hotel in Kingussie. In other words, there is not enough room at the inn - what the travel industry likes to term 'accommodation constraint'.



On the plus side, a five-day LBC autumn holiday has been set up for Northumberland - different sorts of habitat (plenty of coastline) and not such a long journey.

The setting will be a former coaching inn, The White Swan, in the historic town of Alnwick.

The dates are: Sunday November 2 - Thursday November 6

Included will be:

- Coach travel to and from the hotel with pick-ups in Lincolnshire towns
- Four nights' hotel accommodation with evening meal and breakfast
- At least two excursions - including one to Holy Island (Druridge Bay and Alnmouth are among destinations on the radar)

The price is low for a birding holiday - just £375 per person based on two sharing a room - so there is likely to be lively interest.

There are also six single rooms (again £375 per person) but these are likely to be snapped up fast.

Early November is too late for nesting Puffins, other auks and terns, but there may still be a few Sooty Shearwaters on the move and perhaps some early divers and sea duck species. Shorebirds should be plentiful (with a chance of Shorelarks and Snow Buntings), and, further inland, scarce passerines such as Yellow-browed Warbler and Pallas Warbler could put in an appearance. In recent years, Northumberland has also developed a good record for mega-rares - think Grey-headed Lapwing and Greater Sand Plover. If winds are favourable, there could also be breathtakingly big 'drops' of arriving winter thrushes.

Not all birders' husbands/ wives/ partners are also birders, but Alnwick itself has plenty to offer - the castle (film set for scenes in the Harry Potter films) will be closed for winter, but hopefully the extensive gardens will be open.

For anyone who wants to get in a bit of Christmas shopping or perhaps to watch a floodlit Premier League football match, there are buses (plus a railway station four miles away at Alnmouth) to places such as Newcastle and Edinburgh. As with previous holidays, the Lincs Bird Club has put together the holiday in conjunction with Cairngorm Travel through whom bookings need to be made (first come, first served) by telephone: 01405 761334.

Jim Wright

Was Yorkshire's famous Black-browed Albatross pioneering a new migration path?

HATS off to frontline Yorkshire birder Mark Pearson for his captivating talk to the monthly meeting of Grimsby RSPB.

His topic - Filey International - Arrivals and Departures on the North Yorkshire Coast - demonstrated that you don't have to travel to the frozen Antarctic or the Amazon jungle to see awe-inspiring birds.

Especially at times of migration, rich rewards can be reaped just a mile or so from home, in his case at the north end of Filey, the small seaside town which has mostly been unsung since the closure in the 1980s of Billy Butlin's popular holiday camp.

Mark (pictured) is a professional bird guide and contributor to publications such as Birdwatch and Birdwatching. He is also a superb photographer.



The audience of 50 or so was treated to a mesmerising array of such gem species as Waxwing, Goldcrest, Redstart, Nightjar, Red-backed Shrike, Iceland Gull, Temminck's Stint, Surf Scoter, Grey Phalarope and Purple Sandpiper.

Mark used the meeting to offer a belated and amusing apology to the Filey Prom's many strollers whom he scattered, back on December 3, 2013, as he sprinted to catch a photograph of a Brunnich's Guillemot (the first recorded Yorkshire sighting) before it swam far out to sea.

Often the pictures were in close-up because, though much of Filey is what he described as "sub-optimal habitat" for many migrants, they sometimes touch down within yards, or even feet, of observers such as him because it may be "the only port in a storm" for an exhausted bird seeking a brief breather and a peck or two to eat.

But the Yorkshireman also peppered his presentation with shots in which birds were just barely identifiable specks which is, of course, just how we often see them when out in field and forest, mountain and wetland.

Indeed, one of his star pictures - and a talking point during the interval of the meeting - was of a Pallas Leaf Warbler (once poetically described as a "seven-striped sprite" by the late D.I.M.Wallace) which was almost invisible so well was it camouflaged amidst autumn foliage.

The speaker's focus was on the migration that occurs during 'autumn', a season which, for any dedicated birder, starts at the end of June when the first shorebirds, such as Dunlin and Sanderling (often in stunning summer plumage), arrive from their breeding grounds in the north of Europe and beyond.

Later in the season, the weather may cool down, but the birding heats up, culminating in December when unusual diver, duck and gull species put in an appearance, sometimes staying for several weeks (or months) and sometimes only for a day or two (or less).

Like all devotees, Mark is on the look-out for birds every minute of every waking hour (and also, quite possibly, while he is asleep). However, he revealed that he is always on particularly high alert in the last week of October and the first fortnight of November when he never ceases to be thrilled by the sight and sound of parties of

overhead Whooper Swans and individual Short-eared Owls and Woodcocks, sometimes dodging high waves as they fly in over the North Sea from the continent.

From time to time, migrants that have been ringed turn up at Filey - most notably a Redpoll that had been trapped on island off the Norwegian Coast at about noon on one day, then re-caught at 8am the following day.

Recalled Mark: "There had been a strong north-easterly wind that night, and the bird obviously decided it was game-on and to go for it."

Another curiosity was a Snow Bunting which was, at first, understandably assumed to have flown in with a 40-strong flock of fellow-buntings from northern climes, but in fact had been ringed in western France.

The likelihood was that, far from migrating south, it was returning north having over-wintered on the other side of The Channel. Helpfully, the speaker provided identification pointers - for instance shape of head and width of bill - in how to differentiate two superficially similar species, Cormorant and Shag.

He also had an amusing anecdote about his childhood when often the family home also served as a rehabilitation centre for stricken birds with injured gannets accommodated in the bedrooms and puffins in the bathroom.

"I remember the days well," he chuckled. "It was like being in Paradise."

Mark also had a word for 'Albie', the super-rare Black-browed Albatross that spent much of the summers of 2020, 2021 and 2022 at nearby Bempton and Flamborough but occasionally wandered to the waters off Filey.

"This magnificent bird was commonly said to have been either 'lost' or 'in the wrong place'," said Mark. "But is that necessarily so? "Might it have been a case where an outlier species was exploring a new migration path?"

"Nature sometimes has a way of throwing mud at the wall and seeing what sticks."

As further examples of such a phenomenon, he cited Blackcaps that have now started over-wintering in Britain and Yellow-browed Warblers, once rare visitors from Russia that are now seen and heard in ever increasing numbers within our shores during October.

Mark acknowledged that its location on the coast gave Filey something of an advantage in attracting passing migrants, but he noted that 'birding patches' everywhere in Britain have their own individual capacity to do likewise. Most of his talk's audience live close to the coast, and he remarked that Lincolnshire was "an under-watched county".

What better incentive to his listeners to rise early next morning, grab their binoculars and head out and about! Jim Wright



Is road traffic sucking the wildlife out of our countryside?

COULD traffic - especially its noise - be implicated in the decline in Britain's Cuckoos since the 1960s?

This possibility does not chime with the more commonly held theory that it is intensive agriculture which has decimated the countryside of the large hairy caterpillars on which the species likes to feed.

Other commentators have suggested that Cuckoos have fared much better in Scotland because these birds take a different migration route - one less prone to drought - from the one favoured by their English counterparts.

But in his lively and controversial book, *Traffication* (a word contrived by him), Paul Donald advances the traffic noise theory that was first advanced - to modest publicity - by Dutch researchers several years ago.

Donald revisits this suggestion on the basis that, among the few places in England where cuckoos are holding their own are Dartmoor, Salisbury Plain and the Brecks of East Anglia - relatively traffic-free 'windows of calm' as he describes them.

As such, these places are comparable to much of Scotland, where, evidently to the benefit of Cuckoos, traffic is similarly lower than in most parts of Britain.

The author goes on to maintain that, as well as traffic noise, moths - and hence their caterpillars - are also likely to be adversely affected both by pollution from vehicle exhaust fumes and by artificial light from cars and roads.

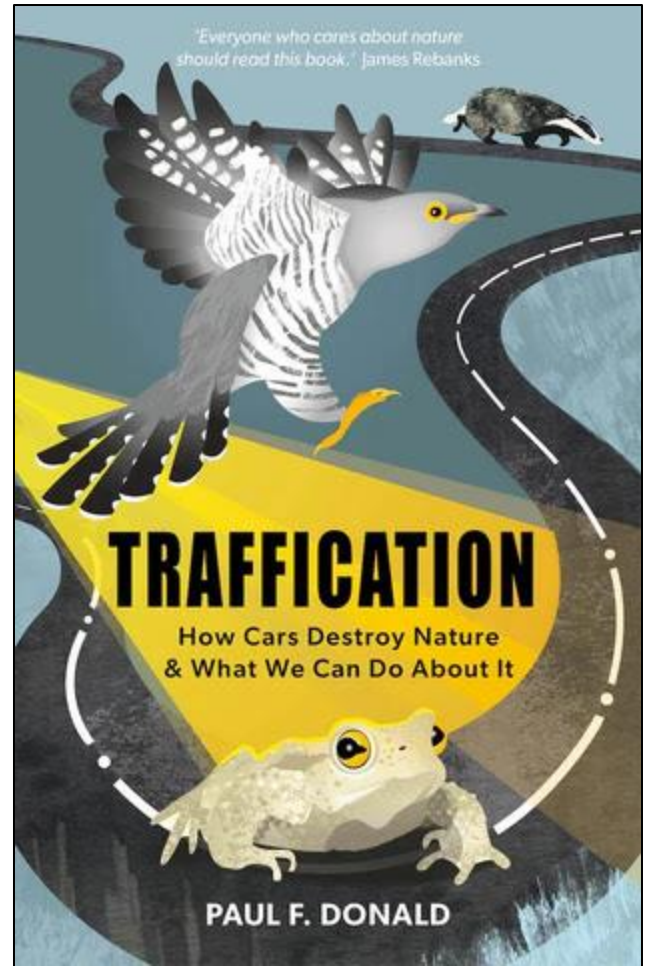
And that's all to the detriment of Cuckoos.

Donald, formerly the RSPB's principal scientist, goes on to extend his traffic noise theory to the decline in Britain of two other summer -visiting species - the Nightingale and the Turtle Dove.

"These patterns of decline may have other explanations," he writes. "But surely traffication demands further attention.

"If we find that the problems facing our vanishing wildlife have their origins in our road system rather than in the vast expanse of the African Sahel or in the global pandemic of climate change, then they become easier to fix.

"Even if turns out that traffic is only a really small part of the problem, reducing its impacts might still throw many species a lifeline.



"One of conservation's core paradigms is that reducing one threat to a species usually enables it to cope better with others."

Sections of *Traffication* are speculative - fanciful even - but credit to the author for his readiness to raise his head above the parapet and court controversy even if it means treading on the toes of powerful lobbies, not least the automotive industry.

Warming to his argument, he insists: "The scientific evidence is overwhelming.

"We are blasting our wildlife away with traffic noise, flattening it with cars and poisoning it with exhaust fumes.

"Traffic has sucked the life out of our countryside - we are quite literally 'driving' our wildlife to extinction."

Traffication is published in paperback at £11.99 by Pelagic Publishing. <https://pelagicpublishing.com/>

Driven grouse shooting

Wild Justice is campaigning for a ban on driven grouse shooting, a practice that involves killing wildlife for sport in the uplands of Britain, particularly in northern England and Scotland. Unlike other game birds, Red Grouse are not captive-reared but managed through intensive habitat manipulation, predator control, and the use of medicated grit. Each year, around 500,000 Red Grouse are shot for entertainment.



The practice also results in the large-scale killing of native predators such as Foxes and Stoats, as well as the illegal persecution of birds of prey like Golden Eagles and Hen Harriers. Habitat destruction, including burning and drainage, damages carbon-rich peatlands, increases flood risks, and contributes to environmental pollution. The dominance of grouse shooting in National Parks raises concerns about its impact on biodiversity and sustainable land management.

With over 60,000 signatures, Wild Justice's petition is nearing the 100,000 needed for a parliamentary debate. Supporters argue that this outdated and destructive practice must end for the sake of wildlife, the environment, and public interest.

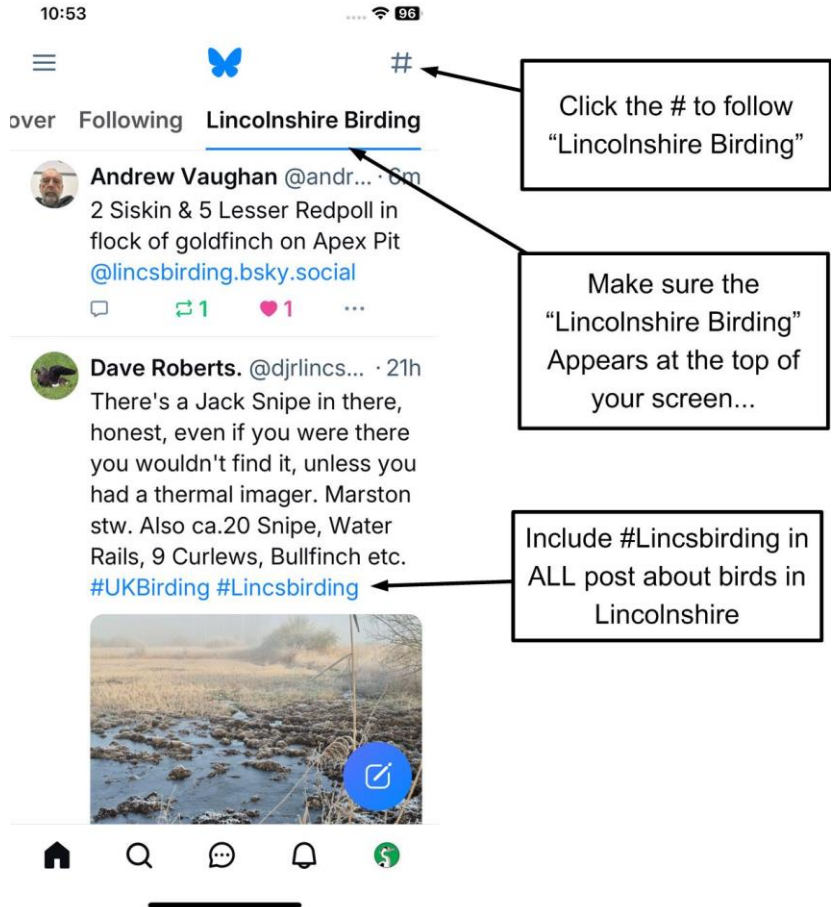
Click here to sign; [Ban driven grouse shooting - Petitions](#)

LBC is on Bluesky!

We're excited to announce that the Lincolnshire Bird Club (LBC) is now on Bluesky! A big thank you to Matt Dineen for setting up the official LBC Bluesky account.

When sharing Lincolnshire birding news on Bluesky, don't forget to use the hashtag **#Lincsbirding** to ensure it reaches the wider community.

Be sure to follow the **Lincolnshire Birding** feed to stay updated with all the latest sightings and news. When using your phone, it should look like this.....



Finally... Do you know anything about Joomla? If so, the bird club could do with your help... Please email info@lincsbirdclub.co.uk



Lincolnshire Bird News – February 2025

Compiled by Jo Whitley

This page is regularly updated to provide an accessible news service on scarce and rare bird sightings in Lincolnshire. This is a free service. For the most up-to-date information, LBC members are encouraged to check commercial news services. The **Sightings** page, @Lincsbirding Twitter account, and the **BlueSky #LincsBirding** feed aim to notify birders about rare (RED) and scarce (BLUE) species that might be of interest within the county.

For detailed updates about Gibraltar Point, please visit their regularly updated blog at <http://gibraltarpointbirdobservatory.blogspot.com/>, which offers far more information than is included here. The latest bird news is compiled by Jo Whitley, to whom the Bird Club is very grateful.

We strive to share all relevant information, but occasionally, something might be overlooked. If you spot anything missing, please don't hesitate to reach out! Send missing records or photographs to info@lincsbirdclub.co.uk with the subject line: **Lincs Latest Bird News** and we will add them to the page!

While this page highlights rarer species, records of common species are equally valuable. Please submit these to the County Recorder via email at recorder_south@lincsbirdclub.co.uk or use the **BTO BirdTrack** or **eBird** apps. All submitted records will be added to the Lincolnshire Bird Club database and included in the Annual Reports. **Important:** None of the reports displayed on this page have been verified or reviewed by the Lincolnshire Bird Club Records Committee.

28/2/2025

Grainthorpe Haven

Brent Goose - 4 Flocks consisting of (400) - (150) - (200) - (50), Hen Harrier, Bar-Tailed Godwit, Curlew (10), Short-eared Owl, Redshank, Dunlin, Linnet, Yellowhammer, Shelduck (4), Skylark, Oystercatcher (2), Marsh Harrier (2), Knot, Little Egret, Green Sandpiper, Chaffinch (6), Cormorant (4), Buzzard (20), Wigeon (4), Gadwall (4), Mute Swan (3), Mallard (4)

RSPB Frieston shore

Black Swan (2)

Winteringham

Eastern Yellow Wagtail - Still Remains on site

RSPB Frampton Marsh

Greater Scaup (2), Great White Egret, Peregrine Falcon, Spotted Redshank (2), Mediterranean Gull (1), Stonechat, Skylark, Shoveler, Shelduck, Reff, Redshank, Pochard, Pintail, Oystercatcher, Lapwing, Great Crested Grebe, Goldeneye, Curlew, Bar-Tailed Godwit, Brent Goose, Avocet, Marsh Harrier, Teal, Tufted Duck, Moorhen, Mallard

Thorpe Landfill Site

Smew (Drake) - Still remains on site, Great Crested Grebe, Lapwing (13), Oystercatcher, Pochard, Shelduck, Shoveler, Skylark, Little Grebe, Little Egret, Dunnock

Deeping Lakes

Glossy Ibis (2) - Still by confluence of River Welland and Maxey Cut, Long-eared Owl (1), Cattle Egret, Goosander, Fieldfare (1), Great Crested Grebe, Great White Egret, Greenfinch (1), Lapwing (40), Pintail (10), Red Kite (2), Sand Martin (1), Rook (2), Shoveler

Pyewipe Grimsby Dock

Black-Tailed Godwit, Curlew, Dunlin, Great Black-Backed Gull, Herring Gull, Kestrel (1), Shelduck, Shoveler, Redshank, Cormorant (1), Little Egret (2), Gadwall (16), Golden Plover (500)

Anderby Creek

Black-Tailed Godwit (1), Brent Goose-Dark Bellied (10), Bullfinch (1), Curlew, Dunlin (7), Great Black-Backed Gull (2), Herring Gull, Lapwing, Linnet (1), Red-necked Grebe (1), Red Throated Diver (106), Redshank (4), Shelduck, Shoveler (45), Skylark (1), Sanderling (3), Pink-footed Goose (40), Grey Heron (1)

Alkborough Flats

Black-Tailed Godwit, Curlew, Linnet, Shelduck, Shoveler, Skylark, Stonechat, Bearded Tit, Buzzard, Golden Plover, Gadwall

Trent Port

Oystercatcher, Great Black-Backed Gull, Greater Spotted Woodpecker, Kestrel, Rook, Skylark, Redwing, Bullfinch, Greenfinch, Linnet, Yellowhammer

Winters Pond

Barnacle Goose, Curlew, Dunlin (20), Goldeneye, Herring Gull, Lapwing, Redshank, Shoveler, Shelduck, Skylark, Yellowhammer, Avocet, Wigeon, Little Grebe

Stapleford Moor

Linnet, Skylark, Mistle Thrush, Song Thrush, Jay, Dunnock, Chaffinch, Buzzard (1)

Tallington Lakes

Greater Scaup (1), Red-Crested Pochard, Cormorant, Egyptian Goose, Canada Goose, Greylag Goose

Middlemarsh Farm

Barnacle Goose (7), Black-Tailed Godwit (6), Curlew (12), Herring Gull (400), Kestrel (1), Lapwing (200), Linnet (20), Oystercatcher (9), Pintail (1), Red Kite (1), Redshank (6), Rook (100), Shelduck (2), Shoveler (2), Skylark (12), Snipe (4), Egyptian Goose (5), Wigeon (300), Teal (40), Pink-footed Goose (3)

27/2/2025

Winteringham

Eastern Yellow Wagtail

Deeping St James

Sand Martin - Over the sewage works

Baston and Langtoft Gravel Pits

Oystercatcher (2), Herring Gull (2), Great Black-Backed Gull (1), Reed Bunting (5), Tufted Duck (44), Wigeon (9), Barn Owl (1)

Baston Fen

Whooper Swan (40), Red Kite (2), Buzzard (1), Marsh Harrier (1), Golden Plover (100)

Tallington Lakes

Greater Scaup (3) - 1 male / 1 Female and First Winter Female

Osgodby Woods

Siskin, Redpoll

Tumby

Filedare (155), Great Spotted Woodpecker (1), Greenfinch (2), Herring Gull (1), Kestrel (1), Oystercatcher (1), Red Kite (4), Rook, Skylark (20), Sparrowhawk (1), Tufted Duck (6), Little Egret (2)

Swanholme Lakes

Great Crested Grebe (2), Wigeon, Mallard, Gadwall, Tufted Duck (4)

Hartsholme Lakes

Great Crested Grebe (3), Great Spotted Woodpecker (1), Nuthatch (1), Mute Swan (3), Grey Heron (7), Coal Tit (1)

Ostlers Plantation

Greater Spotted Woodpecker (2), Great White Egret (2), Skylark, Treecreeper (2), Nuthatch (1), Jay (4), Green Woodpecker (2), Cormorant (1), Buzzard (1)

Deeping Lakes

Glossy Ibis (2) - By confluence of River Welland and Maxey Cut, Goosander (1), Pintail (1), Shoveler (11), Sand Martin (1), Long-eared Owl (1), Green Sandpiper (1), Cormorant (28), Wigeon (33), Teal (32), Greylag Goose (50)

Middlemarsh Farm

Black-Tailed Godwit (6), Curlew (36), Great White Egret (1), Herring Gull (450), Kestrel (1), Kingfisher (1), Lapwing (200), Linnet (30), Oystercatcher (10), Pintail (3), Redshank (70), Rook (150), Shelduck (5), Shoveler (20), Skylark (2), Gadwall (11), Grey Heron (2)

Gibraltar Point NR

Bar-Tailed Godwit (2), Brent Goose -Dark Bellied Goose (11), Common Scoter (6), Curlew (12), Dunlin (15), Eider (82), Great Black-Backed Gull (3), Herring Gull (300), Kittiwake (1), Linnet, Mediterranean Gull (1), Oystercatcher (80), Puffin (1), Razorbill (1), Red Kite (1), Red Throated Diver (30), Red Breasted Merganser (9), Redshank (15), Shelduck (7), Skylark, Turnstone (11), Unidentified Auk (7)

Boultham Mere

Skylark (1), Shoveler (17), Pintail (1), Redwing (25), Greenfinch (1), Greater Spotted Woodpecker (1), Buzzard (1), Cettis Warbler (1), Cormorant (24), Coot (24), Dunnock (1)



3 Greater Scaup seen today at Tallington Lakes © Dave Roberts

26/2/2025

Far Ings NR

Bittern (1), Great Crested Grebe (1), Redwing (2), Redshank (2) Goldeneye (2), Marsh Harrier (3), Mute Swan (3), Tufted Duck, Wigeon

RSPB Frieston Shore

Oystercatcher (2), Brant Goose-Darked Bellied (100), Lapwing, Curlew (1), Black-Tailed Godwit (10), Redshank, Dunlin (1), Shoveler, Shelduck, Goldeneye (6), Mediterranean Gull (1), Herring Gull, Kestrel (1), Linnet, Stonechat (2), Skylark

Long Bennington

Skylark (4), Redwing (10), Greenfinch (1), Yellowhammer (16), Song Thrush (8), Dunnock (2)

Deeping Lakes

Red-breasted Merganser

Thorpe Landfill Site

Smew (Drake) - Still at location

Winteringham

Eastern Yellow Wagtail - 8th day at location

Anderby Creek

Black-Tailed Godwit (1), Brent Goose-Darked Bellied (3), Curlew, Dunlin, Great Black-Backed Gull (1), Greenfinch (1), Herring Gull, House Sparrow, Lapwing, Linnet (2), Pintail (2), Red Throated Diver (37), Redwing (3), Shelduck, Shoveler, Pink-footed Goose (1010), Meadow Pipit (3), Sanderling, Goldfinch (7)

Gibraltar Point

Ring-Tailed Hen Harrier, Black-Tailed Godwit (27), Brent Goose-Dark Bellied (52), Curlew (18), Greater Spotted Woodpecker (1), Greenfinch (1), Lapwing (70), Oystercatcher (1), Pintail (17), Redshank (2), Redwing (4), Shelduck (14), Shoveler (19), Siskin (3), Skylark (6), Water Rail (1), Snipe (1), Pheasant (4), Mistle Thrush (1), Marsh Harrier (1)

Hartsholme Country Park

Kingfisher (1), Great Crested Grebe (1)

RSPB Frampton Marsh

Greater Scaup (2) - Both remain on the Reedbed on site

Baston Gravel Pits

Whooper Swan, Oystercatcher, Herring Gull, Great Crested Grebe, Red Kite, Kestrel, Cormorant, Marsh Harrier, Egyptian Goose, Gadwall, Pink-footed Goose

Boultham Mere

Whooper Swan (2), Shoveler (7), Pintail (1), Linnet (2), Pochard (7), King Fisher (1), Kestrel (1), Greenfinch, Greater Spotted Woodpecker (1), Dunnock (5), Coot (27), Chaffinch (3)

25/2/2025

Shearwater (Tattershall)

Siskin (15)

Thorpe Landfill Site

Smew (Drake) - Still on lake at Jobs Lane

Winteringham

Eastern Yellow Wagtail - Still remains on site

Pyewipe/Grimsby Docks

Yellowhammer, Woodcock (1), Shoveler (9), Shelduck, Redshank, Oystercatcher (2), Lapwing (50), Herring Gull, Dunlin, Curlew, Bar-Tailed Godwit, Black-Tailed Godwit, Kestrel (1), Cormorant (1), Buzzard (1), Golden Plover (13), Grey Plover, Lesser Black-Backed Gull, Wigeon (35), Teal (3)

Temple Wood

Great Spotted Woodpecker (7), Red Kite (1), Skylark (1), Woodcock (1), Treecreeper (1), Sparrowhawk (1), Red-Legged Partridge (2), Jay (2), Green Woodpecker (2), Buzzard (2), Blue Tit (40), Coal Tit (6)

Deeping Lakes

Long-eared Owl (2), Skylark, Shoveler, Red-Crested Pochard, Oystercatcher (1), Lapwing, Kestrel, Greenfinch, Great White Egret, Pochard, Great Spotted Woodpecker, Great Crested Grebe, Goosander (1), Goldeneye (25), Egyptian Goose, Little Egret, Little Grebe, Gadwall, Tufted Duck

Goosemans Field

Greenfinch, Kestrel, Linnet, Herring Gull, Skylark, Song Thrush, Pheasant, Great Tit, Dunnock, Goldfinch

Messingham Sand Quarry

Curlew (2), Great Crested Grebe (1), Great White Egret (1), Herring Gull (2), Kestrel (1), Lapwing (12), Oystercatcher (2), Pochard (37), Shelduck (21), Shoveler (13), Siskin (11), Cormorant (12), Marsh Harrier (2), Buzzard (3), Little Grebe (1), Mute Swan (3)

Trent Port

Linnet, Greenfinch, Bullfinch, House Sparrow, Redwing, Skylark, Rook, Kestrel, Great Spotted Woodpecker, Great Black-Backed Gull, Curlew, Oystercatcher, Treecreeper, Dunnock, Chaffinch, Buzzard, Lesser Black-Backed Gull

Gibraltar Point

Black-Tailed Godwit (3), Brent Goose-Dark Bellied (289), Curlew (30), Eider (2), Great White Egret (2), Lapwing (1250), Linnet (8), Pintail (10), Oystercatcher (4), Red Throated Diver, Red Kite (1), Redshank (12), Rook (4), Shoveler (8), Shelduck (12), Water Rail (2), Whooper Swan (10), Unidentified Auk, Snipe (2), Pink-Footed Goose (90), Little Egret (6), Barn Owl (1)

Marston STW

Greenfinch (1), House Sparrow (1), Linnet (10), Rook (8), Shoveler (5), Water Rail (2)

RSPB Frampton Marsh

Whooper Swan - (Roosting), Mediterranean Gull (2), Peregrine Falcon, Great White Egret, Corn Bunting, Linnet, Stonechat, Merlin, Greater Scaup (2) - 1 Male/1 Female, Ruff, Snipe, Avocet (170+)

Boultham Mere

Corn Crane, Herring Gull (1), Greenfinch (40), House Sparrow (2), Pochard (3), Shoveler (5), Skylark (5), Teal (5), Tufted Duck (14), Greylag Goose (31), Grey Heron (10), Cormorant (20)

24/2/2025

RSPB Frampton Marsh

Scaup (Drake) - On reedbeds, Peregrine Falcon, Whooper Swan -(Roosting Overnight), Merlin, Stonechat, Pintail, Brent Goose, Shoveler, Shelduck, Lapwing, Curlew, Black-Tailed Godwit, Redshank, Ruff, Snipe, Great Crested Grebe, Oystercatcher, Avocet, Great Egret, Grey Heron, Cormorant, Greylag Goose

Deeping Lakes

Sand Martin

Winteringham

Eastern Yellow Wagtail - Still present on site but mobile, Linnet, Greenfinch, Tree Sparrow, Stonechat, Skylark, Rook, Peregrine Falcon, Great Black-Backed Gull, Herring Gull, Curlew, Lapwing, Oystercatcher, Shelduck, Buzzard, Marsh Harrier, White Wagtail, Grey Wagtail, Green Sandpiper

Thorpe Landfill Site

Smew (Drake)

Huttoft Bank

Greenfinch (30), House Sparrow, Kestrel (2), Red Throated Diver (25), Skylark, Herring Gull, Dunlin (21), Buzzard, Chaffinch, Wigeon

RSPB Frieston Shore

Brant Goose, Shelduck, Shoveler, Pintail, Greater Scaup (Female), Pintail, Goldeneye, Oystercatcher, Lapwing, Curlew, Black-Tailed Godwit, Redshank, Turnstone, Dunlin, Herring Gull, Kestrel, Skylark, Stonechat, House Sparrow, Linnet

Pyewipe/Grimsby Docks

Black-Tailed Godwit, Bar-Tailed Godwit, Curlew, Dunlin, Herring Gull, Kingfisher (1), Lapwing (70), Oystercatcher (2), Redshank, Shelduck, Shoveler (3), Skylark (1), Sparrowhawk (1), Ringed Plover (1), Golden Plover (50)

Wroot

Common Crane (2) - Flew North past Idle Bank

Cress Marsh

Curlew (10), Great Black-Backed Gull, Herring Gull, Lapwing, Linnet (20), Oystercatcher (3), Shelduck, Shoveler, Skylark, Great Black-Backed Gull, Stonechat (6), Tufted Duck, Wigeon, Little Egret, Green Sandpiper, Cormorant (2)

Norvartis Ings

Curlew, Dunlin, Herring Gull, Linnet (2), Oystercatcher, Redshank, Shelduck, Shoveler, Skylark, Teal, Little Egret

North Scarle

Great Spotted Woodpecker (1), Greenfinch (1), Linnet (2), Skylark (3), Yellowhammer (1), Meadow Pipit (1), Dunnock (8), Chaffinch (2), Green Woodpecker (1), Great Tit (5), Cormorant (2)

Gibraltar Point

Corn Bunting (22), Curlew, Dunlin, Eider (1), Great Black-Backed Gull, Herring Gull, Lapwing, Oystercatcher, Red Throated Diver (2), Redshank, Shelduck, Skylark, Short-eared Owl (1), Marsh Harrier (1)

Boultham Mere

Skylark (5), Shoveler (9), Pochard (7), Kestrel (2), House Sparrow (2), Great Spotted Woodpecker (1), Buzzard (1), Cettis Warbler (2), Chaffinch (8), Green Woodpecker (3), Collared Dove (2), Dunnock (8), Cormorant (24)

Willow Tree Fen

Common Crane (5), Shelduck, Shoveler, Oystercatcher, Lapwing, Kestrel, Redwing, House Sparrow, Fieldfare, Peregrine Falcon, Buzzard, Marsh Harrier, Golden Plover, Teal, Gadwall

23/2/2025

Jobs Lane Pits

Smew (Drake)

Boultham Mere

Whooper Swan (7), Skylark (5), Shoveler (24), Pochard (6), House Sparrow (2), Herring Gull (4), Greenfinch (2)

Humber Bank

Black-Tailed Godwit, Curlew, Herring Gull, Kestrel (1), Lapwing (3), Linnet (3), Oystercatcher (3), Redshank, Pochard (1), Yellowhammer (1)

Winteringham

Eastern Yellow Wagtail

Ewerby Waithe

Great White Egret (2)

Mablethorpe

Red-necked Grebe (1) - off shore, Red Throated Diver (1100) - Flew Past

Willow Tree Fen

Common Crane (5), Fieldfare, Stonechat, Skylark, Lapwing, Shoveler, Shelduck, Golden Plover, Cormorant, Marsh Harrier, Buzzard, Gadwell, Canada Goose

Huttoft Bank

Bar-Tailed Godwit (1), Black-Throated Diver (1), Brent Goose (1), Curlew (31), Dunlin (2), Great Northern Diver (1), Greenfinch (1), Herring Gull, Oystercatcher (2), Red-Throated Diver (233), Sanderling (1), Rock Pipit (1), Ringed Plover (1), Knot (1)

Cleethorpes Country Park

Bullfinch (3), Greenfinch (4), Herring Gull, Linnet (1), Pintail (1), Grey Heron (1), Long-Tailed Tit (40), Gadwall (8), Tufted Duck (5)

Cress Marsh

Curlew (3), Great Black-Backed Gull (1), Herring Gull (20), Linnet (30), Redshank (2), Shelduck (40), Shoveler (2), Skylark (2), Stonechat (1), Lapwing (40), Teal (40), Wigeon (70), Little Egret (1), Green Sandpiper (1), Cormorant (1)

Thorpe Tilney Drove

Fieldfare, Kestrel (1), Linnet (10), Rook (1), Skylark (1), Yellowhammer (30), Reed Bunting (20), Mute Swan (22)

Marston STW

Curlew (15), Fieldfare (45), Kestrel (1), Red Kite (1), Marsh Harrier (1), Jackdaw (19), Buzzard (2), Chiffchaff (1)

Goxhall Haven

Richard's Pipit (1) - In the area with no general access at Goxhall Aerodrome

Deeping Lakes

Glossy Ibis (2), Long-eared Owl (1), Shoveler, Goldeneye, Kestrel (1), Merganser, Little Owl

RSPB Frampton Marsh

Greater Scaup (2)

Sutton on Sea

Black-Throated Diver (2), Brent Goose Dark Bellied (2), Common Scoter (7), Curlew (2), Dunlin (14), Eider (2), Gannet (1), Great Crested Grebe (1), Great Black-Backed Gull (5), Herring Gull (288), Oystercatcher (2), Red-Throated Diver (705), Shelduck (6), Skylark (2), Cormorant (5), Golden Plover (3)



One of the 2 Great White Egrets today at Ewerby Waithe © Stewart Wilson



Smew (Drake) at Job's Lane Pits © Andy Sims

22/2/2025

Grimsby

Ruddy Shelduck (6) - On the humber mud

Winteringham

Eastern Yellow Wagtail - Still remains at location

Deeping Lakes

Glossy Ibis (2), Long-eared Owl (4)

RSPB Frampton Marsh

Greater Scaup (2) - 1 male/1 Female

Huttoft Bank

Brent Goose Darked Bellied (1), Curlew, Dunlin (15), Herring Gull, Shoveler (3), Skylark (14), Black-Throated Diver (2) - Flew South, Red-Throated Diver (1411), Slovenian Grebe

Alkborough Flats

Little Gull (1) - Flew east, Bittern, Sand Martin (2), Spotted Redshank, Shoveler, Shelduck, Lapwing, Curlew, Redshank, Dunlin, Merlin, Skylark, Stonechat, Linnet, Greenfinch, White Wagtail, Little Egret, Marsh Harrier

Trent Port

Oystercatcher, Herring Gull, Kestrel, Rook, Skylark, Redwing, Bullfinch, Greenfinch, Linnet, Yellowhammer, Marsh Harrier, White Wagtail, Chaffinch, Cormorant

Cleethorpes Country Park

Bullfinch, Greenfinch, Herring Gull (5), House Sparrow, Skylark (2), Tufted Duck (11), Sparrowhawk (1), Reed Bunting (1), Wren,

Mute Swan (2)

Middlemarsh Farm

Black-Tailed Godwit (4), Curlew (3), Herring Gull (180), Kestrel (1), Lapwing (400), Oystercatcher (5), Pintail (3), Redshank (8), Rook (100), Short-eared Owl (10), Shoveler (12), Skylark (12), Snipe (1), Wigeon (400), Marsh Harrier (1), Jackdaw (8), Grey Heron (1)

Hartsholme Park

Goosander, Great Crested Grebe, Great Spotted Woodpecker, Jay, Tufted Duck, Greylag Goose, Great Tit, Long-Tailed Tit, Buzzard, Grey Heron

Boultham Mere

Whooper Swan (7), Shoveler (19), Redwing (2), Pochard (8), Pintail (1), Linnet (2), House Sparrow (2), Greenfinch (4) Great Spotted Woodpecker (2), Egyptian Goose (1), Dunnock (1), Cormorant (22)

Gibraltar Point

Velvet Scoter (1) - in with a group of Common Scoter

Spilsby Country Park

Fieldfare, Greenfinch, Linnet, Rook, Siskin, Skylark (1), Yellowhammer, Treecreeper, Goldcrest, Coal Tit

Louth Canal- Biergate Area

Herring Gull, Kestrel (3), Lapwing (24), Linnet (120), Redwing, Skylark, Yellowhammer (2), Water Rail (1), Reed Bunting (25), Teal (14), Stock Dove (200)

21/2/2025

Holme

Chaffinch (3), Lapwing (21), Fieldfare (20), Jackdaw (20), Greylag Goose (4), Woodpigeon (700)

Hough-on-the-Hill

Little Owl

Immingham North Beck Drain

Shelduck (1), Oystercatcher (1), Curlew (1), Black-Tailed Godwit (13), Redshank (2), Turnstone (2), Caspian Gull (1), Herring Gull (2), Cormorant

Wolla Bank

Common Scoter, Red Throated Diver, Purple Sandpiper, Curlew, Dunlin

Winteringham

Eastern Yellow Wagtail - Still remains on location

Anderby Creek

Russian White-Fronted Goose (29) - In fields north of stones lane

Doddington Hall

Skylark (6), Yellowhammer (1)

Bagmoor

Greater Scaup (1) - on Bagmoor lake

Far Ings

Sand Martin (1) - Seen from Ness hide

Deeping Lakes

Red-Breasted Merganser, Redshank, Great Crested Grebe, Red Kite, Greenfinch, Pochard, Herring Gull, Goldeneye (12), Goosander (2), Oystercatcher (2), Shoveler (2), Glossy Ibis (2), Long-eared Owl (1), Lesser Black-Backed Gull, Great Egret (1), Little Egret (1), Cormorant (1), Tufted Duck (50)

Humberstone

Curlew (8), Greenfinch (32), Herring Gull (12), Skylark (18), Yellowhammer (1), Snipe (1), Reed Bunting (3), Golden Plover (90), Goldfinch (58), Dunnock (1), Wood Pigeon (158)

Gibraltar Point

Black-Tailed Godwit (3), Black Brant Goose (1), Brent Goose Dark Bellied (400), Curlew (33), Great Spotted Woodpecker (1), Greenfinch (1), Kestrel (1), Lapwing (500), Oystercatcher (2), Pintail (7), Redshank (1), Redwing (24), Water Rail (1), Shelduck (14), Shoveler (11), Skylark (2), Whooper Swan (15), White-Fronted Goose (13)

Pyewipe/Grimsby Docks

Kingfisher (1), Lapwing (100), Dunlin, Curlew, Bar-Tailed Godwit, Shoveler (8), Shelduck, Gadwall (20), Wigeon (30), Tufted Duck (5), Mute Swan (6), Little Egret, Canada Goose (5), Greylag Goose

Willow Tree Fen

Common Crane (4), Cattle Egret (3), Lapwing (100), Kestrel (3), Whooper Swan (50), Cormorant, Grey Heron, Marsh Harrier, Wigeon (100)

RSPB Frampton Marsh

Spotted Redshank, Brent Goose, Whooper Swan (1), Black-Tailed Godwit (40), Curlew, Dunlin (150), Goldeneye (10), Great White Egret (2), Herring Gull, House Sparrow (3), Kestrel (2), Lapwing, Linnet (5), Oystercatcher (2), Pintail (50), Redshank, Ruff (5), Skylark, Shoveler, Shelduck, Stonechat (2), Snipe (3), Avocet (52), Golden Plover



Little Owl at Hough on the Hill © Matt Dineen

Common Crane at Willow Tree Fen ©
Clive Doubleday

20/2/2025

RSPB Frampton Marsh

Peregrine Falcon (2), Goldeneye, Brent
Goose, Whooper Swan, Shoveler, Pintail,
Lapwing, Ruff, Black-Tailed Godwit,
Redshank, Ringed Plover, Golden
Plover, Avocet (20+)

**Caistor - Westmoor Ponds, Woods
and Fields**

Kestrel (3), Skylark (9), House Sparrow
(9), Linnet (6), Yellowhammer (5)

Anderby Marsh

Curlew (4), Dunlin (21), Lapwing (13),
Pochard (1), Red Kite (1), Redshank (5),
Shelduck (10), Shoveler (18), White-
Fronted Goose (29), Snipe (3), Teal (96)

Croft Marsh

Russian White-Fronted Goose (10) - on
the cereal field nearby, Woodcock (1),
Black-Tailed Godwit (1), Brant Goose
(5), Peregrine Falcon (1), Stonechat (2)

RSPB Frieston Shore

Spotted Redshank

Deeping Lakes

Glossy Ibis (2), Red-breasted
Merganser, Goldeneye, Shoveler,
Lapwing, Herring Gull, Great Crested
Grebe, Red Kite, Greenfinch

Winteringham

Eastern Yellow Wagtail - remains on the
ploughed field

Rimac

Black-Tailed Godwit (2), Curlew (10),
Great Black-Backed Gull, Herring Gull,
Lapwing, Linnet, Redshank, Rook,
Shelduck, Shoveler (37), Skylark,
Stonechat (2), Gadwall (10), Tufted
Duck (4), Teal (30), Wigeon (30), Grey
Heron (1)

Middlemarsh Farm

Black-Tailed Godwit (7), Curlew (47), Herring Gull (700), Great Black-Backed Gull (1), Kestrel (3), Lapwing (200), Oystercatcher (4), Pintail (4), Redshank (7), Rook (100), Shelduck (2), Short-eared Owl (1), Shoveler (4), Skylark (11), Snipe (1), Sparrowhawk (1), Cormorant (64), Egyptian Goose (4)

Gibraltar Point

Black Brant Goose, Brant Goose Dark Bellied, Russian White-Fronted Goose (51), Shelduck, Shoveler, Pintail, Pochard, Eider, Common Crane, Oystercatcher, Lapwing, Curlew, Bar-Tailed Godwit, Redshank, Turnstone, Dunlin, Great Crested Grebe, Herring Gull, Great Spotted Woodpecker, Skylark, Stonechat, Linnet, Lapwing, Knot

Alkborough Flats

Barnacle Goose, Whooper Swan, Shelduck, Shoveler, Pintail, Lapwing, Curlew, Black-Tailed Godwit, Dunlin, Redshank, Stonechat, Marsh Harrier

Reads Island

Curlew, Dunlin, Lapwing (50), Linnet, Shelduck, Eastern Yellow Wagtail, Marsh Harrier (1), Song Thrush (1)



Pyewipe/Grimsby Docks

Bar-Tailed Godwit, Black-Tailed Godwit, Lapwing (120), Curlew, Dunlin, Shoveler (7), Redshank, Little Egret (1), Golden Plover (50), Teal (3), Mute Swan (3)

19/2/2025

Anderby Creek

Russian White-Fronted Goose (22)

Anderby Marsh

Curlew (4), Dunlin (16), Lapwing (2), Redshank (7), Shelduck (4), Shoveler (16), Snipe (3), Teal (130), Wigeon (530)

Gibraltar Point

Black Brant (1) - In With Dark Bellied Brant (300), Russian White-Fronted Goose (21)

Temple Bruer

Hawfinch (1) - at St Johns Church

Woodhall Spa

Red Kite (2)

Winteringham

Eastern Yellow Wagtail

Ancaster, Grantham

Corn Bunting (20), Linnet (16), Red Kite (1), Siskin (1), Skylark (3)

Pyewipe/Grimsby Docks

Black-Tailed Godwit, Curlew, Dunlin, Great Black-Backed Gull, Herring Gull, Lapwing (100), Redshank, Shelduck, Shoveler (3), Lesser Black-Backed Gull (3), Wigeon (37), Meadow Pipit (8), Little Egret (1)

Deeping Lakes

Long-eared Owl (7), Glossy Ibis (2) Greenfinch, Fieldfare, Kestrel, Red Kite, Cattle Egret, Great Crested Grebe, Herring Gull, Lapwing, Merganser, Shoveler, Egyptian Goose, Tufted Duck, Little Owl

Boultham Mere

Greenfinch (1), Pintail (1), Shoveler (2), Skylark (5), Treecreeper (1), Sparrowhawk (2), Greylag Goose (48), Gadwall (1), Cormorant (27), Goldfinch (52)

Witham Mouth

Cattle Egret (6), Brent Goose, Curlew (80), Dunlin (350), Eider (1), Goldeneye (2), Great Black-Backed Gull, Great Crested Grebe (2), Herring Gull, Lapwing (1), Pintail (2), Oystercatcher, Red-Breasted Merganser (8), Redshank, Redwing, Ruff (5), Shelduck, Skylark (3), Turnstone (13)

RSPB Frieston Shore

Black-Tailed Godwit (1), Curlew (100), Dunlin (2), Goldeneye (25), Herring Gull, Lapwing (1000), Pintail (150), Redshank (30), Ruff (1), Shoveler (3), Turnstone (3), Wigeon (400), Snipe (2), Rock Pipit (1)

RSPB Frampton Marsh

Bewicks Swan (5), Whooper Swan, Stonechat, Skylark, Shoveler, Shelduck, Redshank, Pochard, Pintail, Linnet, Lapwing, Kestrel, Great White Egret, Goldeneye, Dunlin, Curlew, Black-Tailed Godwit, Brent Goose, Avocet, Golden Plover, Ringed Plover

Lincolnshire CCP

Common Scoter (2), Curlew (13), Dunlin (16), Eider (2), Great Black-Backed Gull (3), Great Crested Grebe (1), Herring Gull (15), Kestrel (2), Lapwing (4), Red Throated Diver (3), Redshank (8), Rook (30), Shelduck (4), Shoveler (18), Snipe (3), Pink-Footed Goose (450), Gadwall (106)



Eastern Yellow Wagtail at Winteringham on Composition Road in newly ploughed field © Graham Catley

18/02/2025

Messingham Sand Quarry

Great White Egret (1), Redpoll, Shelduck (18), Siskin (30), Shoveler (12), Redwing (71), Pochard (51)

Huttoft Pit

Great Crested Grebe (1)

Anderby Creek

Tundra Bean Goose (5)

Tongue End Boston

Great White Egret (1), Kestrel (1), Red Kite (2), Rook

Dovendale, Louth

Corn Bunting 300, Grey Partridge 2, Jackdaw 200+, Linnet 250+, Tree Sparrow, Yellowhammer 200+

Elmhouse Farm

Buzzard, Stonechat, Teal, Wigeon

Huttoft

Common Gull, Curlew, Great Black-backed Gull 4, Red-throated Diver 5, Short-eared Owl

Sandilands

Magpie, Short-eared Owl

Rimac

2 Cattle Egret, Stonechat, Great White Egret 1, Little Egret, Shoveler 30+

Wolla Bank

Barnacle Goose 10, Golden Plover, Lapwing 100, Pink-footed Goose c1500, White-fronted Goose 9

17/02/2025

Alkborough Flats

Barnacle Goose, Bearded Tit, Bittern, Buzzard, Cetti's Warbler, Chiffchaff, Goldeneye 6, Great Spotted Woodpecker, Grey Wagtail 1, Marsh Harrier 1, Pink-footed Goose, Stonechat 5, White-fronted Goose 6

Anderby Creek

Barnacle Goose 10, Cetti's Warbler, Marsh Harrier, Pink-footed Goose 300, Russian White-fronted Goose 14, 2 Tundra Bean Goose, Water Rail

Deeping Lakes

Long-eared Owl 5

Frampton Marsh

Water Pipit

Freshney

Buzzard, Kingfisher

Gibraltar Point

Bar-tailed Godwit 1, Black-tailed Godwit 1, Brent Goose 170, Buzzard 1, Common Scoter 6, Cormorant 94, Eider 1, Curlew 174, Fulmar 1, Great Black-backed Gull 11, Herring Gull 220, Lapwing 440, Little Grebe 19, Pintail 7, Redshank 65, Red-throated Diver 25, Russian White-fronted Goose 17, Sparrowhawk, Stonechat 2, Teal 80, White-fronted Goose 17

Norton Big Wood

Great Spotted Woodpecker, Redwing 30

Novartis Ings

Caspian Gull

Rippingale

Fieldfare 70, Goldcrest 1, Great Spotted Woodpecker 2, Red Kite 2

Tetney Marshes RSPB

Brent Goose, Bullfinch, Great Spotted Woodpecker, Stonechat

Lincs CCC

Cetti's Warbler 1, Common Scoter 2, Guillemot, Marsh Harrier 2, Red-throated Diver 35

The Haven

Brent Goose 500, Chiffchaff 1, Curlew 16, Great Spotted Woodpecker, Redshank 42, Stonechat 2

16/02/2025

Boston Fen

Goosander 4, Great White Egret 2, Jay, Kestrel 1, Lapwing 50

Boultham Mere

Buzzard 2, Egyptian Goose 3, Great Spotted Woodpecker 1, Little Egret 5, Pintail 1, Redwing 120

Deeping Lakes

Buzzard, Cattle Egret 1, Goldcrest, Goosander 7, Great White Egret 1, Green Woodpecker 1, Kestrel 2, Little Egret 2, Red Kite 2, Long-eared Owl 5, Short-eared Owl, Whooper Swan 34

Donna Nook

Buzzard 2, Curlew 22, Goldcrest 2, Kestrel 3, Lapwing 30, Linnet 75

Eagle Barnsdale

Great Black-backed Gull 2, Grey Partridge, Rook 15, 1 Starling 200

Far Ings

Buzzard 2, Curlew, Goldeneye 1, Great Crested Grebe 1, Great Spotted Woodpecker 1, Green Woodpecker 1, Marsh Harrier 2, Redshank 3

Five Mile Bridge to Short Ferry

Barn Owl 1, Buzzard 1, Goosander 2, Grey Heron 2, Kestrel 1, Moorhen 9, Mute Swan 14, Rook 47, Woodpigeon 2583

Frampton Marsh

Avocet, Bewick's Swan, Black-tailed Godwit, Golden Plover, Great White Egret, Kestrel, Marsh Harrier, Ringed Plover, Snipe, Stonechat, Whooper Swan (no numbers given)

Gibraltar Point

Barn Owl, Black-headed Gull 500, Brent Goose 500, Common Gull 150, Corn Bunting 19, Curlew 27, Golden Plover 22, Goosander 2, Great Black-backed Gull 10, Lapwing 600, Little Egret 5, Little Grebe 11, Merlin 1, Stonechat 1, Water Pipit

Lincolnshire CCC

Bittern, Buzzard, Cetti's Warbler, Common Scoter 7, Curlew 3, Gadwall 85, Kestrel 2, Marsh Harrier, Pink-footed Goose 200, Water Rail 1

North Rauceby

Grey Partridge, Kestrel 1, Red Kite 1, Red-legged Partridge 4

Pig Lane, Lincoln

Barn Owl 2, Egyptian Goose 4, Green Woodpecker, Kestrel, Kingfisher

Welland Bank

Goosander 2

Willow Tree Fen

Barn Owl 2, Buzzard 2, Fieldfare, Golden Plover 65, Greylag Goose 40, Kestrel 1, Lapwing 140, Marsh Harrier 28, Shelduck 1, Shoveler 15, Wigeon 20

15/02/2025

Anderby Creek

Curlew 3, Dunlin 3, Gadwall 95, Barnacle Goose 6, Black-tailed Godwit 1, Pink-footed Goose 600, Russian White-fronted Goose, Tundra Bean Goose 5, White-fronted Goose 29, Barn Owl, Redshank 4, Shoveler 15. Teal 100

Chapel 6 Marshes

Bittern

Dovendale, Louth

30 Reed Bunting, Chaffinch 100, Corn Bunting c300, 200 Linnet, Starling 100, 250 Yellowhammer

Frampton Marsh

Avocet 8, Brent Goose 100, Buzzard, Dunlin 50, Grey Plover, Marsh Harrier 3, Pintail 44, Pochard 22, Snipe 8 Teal Whooper Swan 1, Wigeon,

Gibraltar Point

Little Egret 7, Black-tailed Godwit, Brent Goose 37, Hen Harrier (rt), Marsh Harrier 1, Pintail 5, Water Pipit 1

Grainsby

Buzzard, Fieldfare, Jay 2

Metheringham

Tawny Owl

Middlemarsh Farm

Buzzard 2, Cormorant 59, Fieldfare 21, Black-tailed Godwit, Black-headed Gull 426, Short-eared Owl 2, Golden Plover 1, Woodcock

Skegness Forefront

Red Throated Diver 21, Oystercatcher, Sanderling 3, Woodcock

14/2/2025

Louth (St James Church)

Black Redstart

Anderby Creek

Tundra Bean Goose (5), Russian White-Fronted Geese (29), Barnacle Goose (9), Red-Throated Diver (124), Common Scoter (3), Curlew, Dunlin, Great Black-Backed Gull, Herring Gull, Kestrel (3), Lapwing, Shoveler, Shelduck

Deeping High Bank

Short-eared Owl 3

Doddington Hall

Fieldfare (2), Great Spotted Woodpecker (2) House Sparrow (4), Kestrel (1), Linnet (9), Redwing (6), Skylark (2), Stonechat (1), Yellowhammer (2), Little Grebe (1), Long-tailed Tit (5), Reed Bunting (1)

Marston STW

Curlew (10), Fieldfare (35), Greenfinch (3), Marsh Harrier (1), Pink-Footed Goose (1), Buzzard (3)

Cleethorpes Country Park

Bullfinch, Curlew (10), Great Crested Grebe, Greenfinch, Herring Gull, House Sparrow, Little Egret, Grey Heron (4), Chaffinch, Cormorant

Deeping Lakes

Cattle Egret (1), Goldeneye, Goosander (2), Great Crested Grebe, Great White Egret, Greenfinch, Herring Gull, Kestrel, Red Kite (2), Shoveler, Shelduck, Mute Swan (6), Grey Heron, Egyptian Goose, Cormorant

Toft Newton Reservoir

Fieldfare (7), Goldeneye (12), Great Spotted Woodpecker (1), Kestrel (1), Linnet (30), Redwing (3), Rook (10), Shelduck (4), Teal (39), Tufted Duck (3), Little Grebe (8)

Pyewipe/Grimbsy Docks

Bar-Tailed Godwit, Black-Tailed Godwit, Curlew, Dunlin, Great Black-Backed Gull, Herring Gull, Lapwing (200), Redshank, Shelduck, Shoveler (5), Ringed Plover (1), Grey Plover, Golden Plover (1000), Little Egret (1), Lesser Black-Backed Gull (1)

Boultham Mere/Swanpool

Great Spotted Woodpecker (30), Greenfinch (3), House Sparrow (2), Kestrel (1), Linnet (40), Pintail (1), Redwing (200), Rook, Shoveler (14), Skylark (4), Whooper Swan (3), Yellowhammer (4), Wren (3), Teal (19), Tufted Duck (10)

Leadenham

Caspian Gull (1)

Cut End (Boston)

Cattle Egret (10), Long-Tailed Duck, Slavonian Grebe

RSPB Frampton Marsh

Peregrine Falcon (2) - 1 Male/1 Female, Pintail, Ruff, Goldeneye, Stonechat (20), Great White Egret, Water Rail, Spotted Redshank, Redshank, Brent Goose, Whooper Swan, Great Crested Grebe, Lapwing, Curlew, Black-Tailed Godwit, Dunlin, Herring Gull, Fieldfare, Shoveler, Shelduck

13/2/2025

Deeping Lakes

Long-eared Owl (6) - 2 in trees by hide and 4 in trees on side of lake channel, Cattle Egret (1) - Along the River

Halton Marshes

Water Pipit (1)

Sutton on Sea

Red-necked Grebe

Withern, Alford

Whooper Swan (36)

Tallington Lakes

Greater Scaup (3) - 1 Male and 2 Female, Red Crested Pochard, Great Crested Grebe, Rook, Greenfinch

Anderby Creek

Dunlin, Curlew, Great Black-Backed Gull, Herring Gull, Kestrel (1), Lapwing, Red-Throated Diver (73), Redshank, Shelduck, Shoveler, Meadow Pipit (5), Golden Plover (1), Barn Owl (1)

Tattershall (Sleaford Road)

Bullfinch (1), Goosander (4), Redshank (7), Little Egret (2), Little Grebe (1), Wigeon (6)

Tattershall Thorpe

Goldeneye (2), Lapwing (43), Redshank (1), Redwing (25), Shelduck (3), Teal (19), Tufted Duck (15), Egyptian Goose (4), Cormorant (22)

Pyewipe/ Grimsby Docks

Bar-Tailed Godwit, Black-Tailed Godwit, Curlew, Dunlin, Herring Gull, Great Black-Backed Gull, Redshank, Shoveler, Shelduck (1), Lapwing (100), Ringed Plover (1), Golden Plover (3000), Grey Heron (1), Marsh Harrier (1)

Trent Port

Rook, Skylark, Stonechat, Bullfinch, Greenfinch, Yellowhammer, Green Woodpecker, Buzzard, Cormorant, Teal

Far Ings NR

Water Rail (1), Shoveler (1), Kestrel (1), Goldeneye (2), Canada Goose (2), Cettis Warbler (1), Mallard (8), Mute Swan (2), Moorhen (1)

RSPB Frieston Shore

Brant Goose, Shoveler, Pintail, Goldeneye, Oystercatcher, Curlew, Redshank, Herring Gull, Kestrel, Skylark, House Sparrow, Linnet

RSPB Frampton Marsh

Snow Bunting, Great Crested Grebe, Hen Harrier, Ruff, Peregrine Falcon (2) - 1 Male, 1 Female, Whooper Swan, Pintail, Lapwing, Curlew, Black-Tailed Godwit, Dunlin

Alkborough Flats

Barnacle Goose (300), Curlew (85), Goldeneye (21), Lapwing (1000), Pintail (15), Redshank (10), Rook (5), Shelduck (42), Shoveler (2), Stonechat (4), Water Rail (1), Marsh Harrier (7), Little Egret (1), Bearded Tit (15)



One of the 15 Bearded Tits at Alkborough Flats © Andrew C Sims

12/2/2025

East Holton Skitter

Barnacle Goose (12), Shoveler (12), Goldeneye (20), Lapwing (90), Bar-Tailed Godwit (2), Black-Tailed Godwit (25), Woodcock (9) - After Dark, Redshank (42), Dunlin (380), Kestrel (2), Skylark (16), Stonechat (1), Linnet (10), Yellowhammer (25), Water Pipit (1), Marsh Harrier (5), Barn Owl (1), Buzzard (1)

Sutton on Sea

Red-necked Grebe (1)

Belton Estate NT

Hawfinch (16)

Anderby Creek

Common Scoter (3), Curlew, Dunlin (22), Great Black-Backed Gull, Herring Gull, House Sparrow, Kestrel (3), Lapwing, Red-Throated Diver (30), Redshank, Shelduck (1), Shoveler, Grey Heron (1), Goldcrest (2), Dunnock, Greylag Goose

Doddington Park (Residential Garden)

Lesser Redpoll (3), Great Spotted Woodpecker (1), Coal Tit, Goldfinch (10)

Boultham Mere/Swanpool

Greenfinch (2), Herring Gull (1), House Sparrow (3), Pintail (1), Pochard (5), Shoveler (12), Whooper Swan (2), Teal (29), Tufted Duck (12), Little Egret (1), Cormorant (19)

Manby and Carlton Flash

Great White Egret (1), Herring Gull (2), Kestrel (2), Redshank (1), Rook (40), Shelduck (8), Shoveler (24), Skylark (2), Water Rail (1), Woodcock (1), Buzzard (2), Cettis Warbler (1), Wigeon (350), Reed Bunting (2)

Claypole

Short-eared Owl (1) - Flew over Barnaby Lane, Fieldfare (25)

Mablethorpe

Shore Lark (2) - On the beach near Seal Sanctuary

RSPB Frampton Marsh

Hen Harrier (1), Black-Tailed Godwit, Curlew, Dunlin, Lapwing, Goldeneye, Pintail, Pochard, Redshank, Ruff, Shelduck, Shoveler, Whooper Swan, Bewick Swan (2) - Flew off around 07.45 hours, Avocet, Marsh Harrier

Cleethorpes Boating Lake

Pochard (11) - 10 Drakes

Withern Ings

Kestrel (1), Rook (5), Skylark (1), Meadow Pipit (1), Song Thrush (1), Wren (8), Grey Partridge (2)

Deeping Lakes

Short-eared Owl (1) - Between entrance and bend in river at Welland Bank, Glossy Ibis (2)

Toft Newton Reservoir

Fieldfare (7), Goldeneye (10), Great Crested Grebe (1), Great White Egret (1), Kestrel (20), Oystercatcher (1), Rook (110), Shelduck (20), Yellowhammer (1)



Shore Larks on the beach at Mablethorpe © Dean

11/2/2025

Lincolnshire CCP

Black-Tailed Godwit (4), Great Black-Backed Gull (6), Lapwing (410), Curlew (58), Dunlin (26), Herring Gull (30), Redshank (2), Rook (150), Shoveler (14), Shelduck (3), Stonechat (1)

RSPB Frieston Shore

Shelduck (20), Shoveler (13), Pintail (232), Goldeneye (16), Lapwing (348), Redshank (3), Herring Gull (20), Great Black-Backed

Gull (1), Little Grebe (16), Blue Tit (1)

Trent Port

Herring Gull (2), Great Spotted Woodpecker (3), Rook (200), Redwing (40), Fieldfare (2), Bullfinch (3), Linnet (16), Jay (1), Jackdaw (80), Great Tit (6), Green Woodpecker (1)

Deeping Lakes

Long-eared Owl (2 - 1 in ivy bush and 1 across channel), Shoveler, Goldeneye, Herring Gull, Great Crested Grebe, Red Kite, Kestrel

Pyewipe/Grimsby Docks

Bar-Tailed Godwit, Black-Tailed Godwit, Curlew, Dunlin, Herring Gull, Lapwing (200), Redshank, Shelduck, Turnstone (1), Grey Heron (1), Little Grebe (1), Teal (8), Wigeon (11)

Bardney

Whooper Swan (200)

Baston Gravel Pits

Lapwing, Stonechat, Great Egret

Willow Tree Fen

Fieldfare, Stonechat, Linnet, Shelduck, Lapwing, Kestrel, Peregrine Falcon, Common Crane (1)

Boultham Mere

Whooper Swan (2), Shoveler (27), Pochard (4), Herring Gull (2), House Sparrow (2), Great White Egret (2), Black-Headed Gull (200), Buzzard (1), Cormorant (18), Egyptian Goose (3), Grey Heron (1), Grey Partridge (2)

North Rauceby

Kestrel (1), Lapwing (200), Buzzard (2), Common Gull (14)

RSPB Frampton Marsh

Oystercatcher, Whooper Swan, Goldeneye, Lapwing, Ruff, Black-Tailed Godwit, Redshank, Dunlin, Pintail, Shoveler, Shelduck, Ringed Plover, Snipe, Avocet

Cleethorpes Beach (North of Outfall)

Barnacle Goose (1), Curlew (1), Great Black-Backed Gull (1), Herring Gull (1), Oystercatcher (5), Pochard (4), Redshank (2), Shelduck (7)

10/2/2025

Willow Tree Fen

Hen Harrier (Male)

RSPB Tetney Marsh

Hen Harrier (Male) - At south End of site

Trent Port

Great Spotted Woodpecker (1), Rook (250), Skylark (2), Redwing (11), Bullfinch (4)

Alkborough Flats

Barnacle Goose, Curlew, Dunlin, Goldeneye (1), Great Spotted Woodpecker, Greenfinch, Herring Gull, House Sparrow, Kestrel, Lapwing, Linnet, Pintail, Redshank, Shelduck, Shoveler, Stonechat (2), Water Rail, Whooper Swan (27), Marsh Harrier, Little Egret, Golden Plover, Bearded Tit

Fen Farm

Yellowhammer (8), Linnet (190), Fieldfare (3), Redwing (25), Skylark (75)

RSPB Frampton Marsh

Pintail, Ruff, Merlin, Kingfisher, Peregrine Falcon, Brent Goose, Whooper Swan, Shoveler, Great Crested Grebe, Herring Gull, Redshank, Black-Tailed Godwit, Lapwing, Ringed Plover, Avocet, Little Grebe, Mute Swan

Eagle Hall Woods

Fieldfare (23), Kestrel (2), Linnet (2), Redwing (6), Green Sandpiper (1), Starling (35), Robin (2)

North Hykeham (Post Mill Close)

Goldeneye (2), Goosander (2), Great Crested Grebe (1), Great Spotted Woodpecker (1), Greenfinch (1), Oystercatcher (1), Pochard (1), Cormorant (1)

Deeping Lakes

Shoveler, Goldeneye, Goosander, Water Rail, Herring Gull, Great Black-Backed Gull, Cattle Egret, Red Kite, Kingfisher, Rook

Boultham Mere/ Swanpool

Greenfinch (1), Kestrel (1), Pintail (1), Pochard (2), Shoveler (47), Greylag Goose (60), Mallard (19), Cormorant (22), Dunnock (1), Collard Dove (1), Coot (31)

Pyewipe/ Grimsby Docks

Curlew, Dunlin, Great Black-Backed Gull, Herring Gull, Lapwing (150), Redshank, Shelduck, Shoveler (1), Wigeon (25), Tufted Duck (9), Teal (6), Canada Goose (2), Gadwall (20)

Gibraltar Point

Water Rail (1), Turnstone (2), Shoveler (19), Shelduck (17), Redshank (7), Red-Throated Diver (3), Pintail (1), Oystercatcher (150), Lapwing (450), Herring Gull (2000), Great Black-Backed Gull (4), Eider (6), Dunlin (7), Curlew (27), Brent Goose (83), Black-Tailed Godwit (7), Knot (3), Sanderling (320), Little Grebe (8), Little Egret (1)

9/1/2025

Bardney

Great White Egret - Flew West, Goosander, Whooper Swan - West of causeway Road in Field around 280-300

Willow Tree Fen

Hen Harrier (Male)

Donna Nook (Howdens Pullover)

Curlew (1), House Sparrow (1), Brent Goose Dark Bellied (200), Rook (10), Shelduck, Skylark (5), Barn Owl (1), Dunnock (1)

Saltfleetby

Curlew, Great Black-Backed Gull, Herring Gull, Kestrel (1), Shelduck (1), Skylark (2), Sparrow Hawk (1), Dunnock (3), Chaffinch (3)

Deeping Lakes

Long-eared Owl (6-3 in ivy bush and 3 across channel), Glossy Ibis (2), Kestrel (1), Fieldfare, Redwing

Huttoft Bank

Curlew (55)

Boultham Mere

Whooper Swan (4), Great Spotted Woodpecker (1), House Sparrow (2), Skylark (2), Shoveler (4)

North Somercoates (Marsh Lane)

Fieldfare (20), Lapwing (300), House Sparrow (2), Redshank (1), Rook (60), Skylark (1), Spoonbill (1), Golden Plover (8), Meadow Pipit (1), Pheasant (17)

Anderby Creek

Curlew, Dunlin (21), Great Black-Backed Gull, Herring Gull, Kestrel (1), Lapwing (400), Redshank (5), Shelduck (3), Shoveler, Skylark (1), Stonechat (1), Water Rail (1), Golden Plover (3), Goldcrest (2), Gadwall (100), Snipe (2), Tufted Duck, Wigeon

Tallington Lakes

Ring-necked Duck (Drake), Red-Crested Pochard (50), Scaup (2), Red Kite (1), Greenfinch, Great Spotted Woodpecker, Goldeneye (1)

Middlemarsh Farm

Black-Tailed Godwit (2), Caspian Gull (1), Curlew (8), Great Black-Backed Gull (1), Herring Gull (200), Kestrel (3), Lapwing (450), Linnet (20), Oystercatcher (5), Redshank (7), Rook (100), Shelduck (6), Short-eared Owl (1), Shoveler (24)

Sutton on Sea

Red-necked Grebe (1), Rook (5), House Sparrow (3), Greenfinch (1)

Covenham Reservoir

Great Crested Grebe (7), Goldeneye (20), Great Spotted Woodpecker (10), Kestrel (1), Linnet (1), Rook (10), Shoveler (75), Little Grebe (4), Cormorant (31)

Gibraltar Point

Brent Goose Dark Bellied, Curlew, Dunlin, Great Black-Backed Gull, Herring Gull, Lapwing, Redshank, Shelduck, Rock Pipit, Corn Bunting, Little Egret (2), Reed Bunting

8/2/2025

Carrington Farm (Tongue End)

Short-eared Owl (1), Cattle Egret (3), Kestrel (4), Buzzard, Grey Heron (3)

East Halton Skitter

Water Pipit (2)

Bagmoor

Iceland Gull

Tallington Lakes

Ring-necked Duck, Greater Scaup (3), Hawfinch (2), Red Crested Pochard (1)

Anderby Creek

Black-Tailed Godwit (1), Dunlin (30), Fieldfare (30), Great Black-Backed Gull, Herring Gull, Kestrel (2), Lapwing, Redshank (5), Shelduck, Shoveler, Snipe (5), Bearded Tit (2)

Sutton on Sea

Red-necked Grebe

Boultham Mere

Shoveler (28), Redwing (5), Pochard (1), House Sparrow (1), Greenfinch (2), Great Spotted Woodpecker (2), Gadwall (2), Egyptian Goose (3), Green Woodpecker (1), Long-tailed Tit (1)

Goosemans Field

Curlew (1), Linnet (5), Skylark (3), Yellowhammer (1)

Deeping Lakes

Long-eared Owl (8)

Caistor

Greenfinch (1), House Sparrow (10), Rook (2), Lesser Black-Backed Gull (1), Coal Tit (1), Great Tit (1)

Gibraltar Point

Black-Tailed Godwit, Brent Goose Dark Bellied, Curlew, Greenfinch, Herring Gull, Lapwing, Pintail, Pochard, Redshank, Shelduck, Shoveler, Corn Bunting, Egyptian Goose, Tufted Duck

Holton Park

Great Spotted Woodpecker (1), Greenfinch (1), Redwing (12), Nuthatch (3), Treecreeper (1), Song Thrush (1), Mistle Thrush (1), Jay (2)

Pyewipe/Grimsby Docks

Black-Tailed Godwit, Bar-Tailed Godwit, Bullfinch, Curlew, Dunlin, Eider (1), Kestrel (1), Great Black-Backed Gull, Herring Gull, Linnet (1), Lapwing (160), Redshank, Shelduck, Shoveler (20), Short-eared Owl (1)

Cleethorpes Country Park

Great Crested Grebe (1), Greenfinch (1), Linnet (1), Herring Gull

Norvartis Ings

Black-Tailed Godwit, Curlew, Dunlin, Herring Gull, Lapwing, Redshank, Shoveler, Shelduck, Lesser Black-Backed Gull, Grey Heron

RSPB Frampton Marsh

Cattle Egret, Bewicks Swan (2), Black-Tailed Godwit (2), Brent Goose (700), Curlew (14), Dunlin (11), Eider (1), Goldeneye (1), Great White Egret (2), Herring Gull (4), Kestrel (1), Lapwing (300), Merlin (1), Oystercatcher (3), Pintail (8), Redshank (8), Ruff (8), Whooper Swan (28), Shoveler (6), Ringed Plover (1)



Iceland Gull very briefly at Bagmoor this afternoon © Niel Drinkall

Short-eared Owl at Carrington Farm (Tongue End) © Clive Doubleday

7/2/2025

Brigg Marina

Shoveler (2), Merganser (13), Great Crested Grebe (1), Rook (250), Redwing (1), Fieldfare (75)

Wolla Bank

Fulmar, Kittiwake, Sandwich Turn

Anderby Creek

Sandwich Tern- South at Anderby

Leadenham

Caspian Gull (3)

Huttoft Bank

Curlew (52), Herring Gull, Kittiwake (2)

Tattershall Bridge (Sleaford Road)

Goosander (5), Redshank (2), Little Grebe (4)

Deeping Lakes

Long-eared Owl (10), Cattle Egret, Great White Egret, Goldeneye, Kestrel, Red Kite (2), Little Owl, Cormorant (17), Gadwall, Teal, Wigeon, Tufted Duck

Hartsholme/Swanholme Lakes

Goosander, Great Spotted Woodpecker, Shoveler, Wigeon, Gadwall, Cormorant, Mute Swan, Canada Goose

RSPB Frampton Marsh

Black-Tailed Godwit, Brent Goose Dark Bellied, Curlew, Dunlin, Goldeneye, Great White Egret (1), Kestrel, Pintail, Pochard (20), Redshank, Ruff, Shelduck, Shoveler, Stonechat (1), Lingfisher, Water Rail, Peregrine Falcon, Snipe, Reed Bunting, Little Egret, Avocet, Teal, Canada Goose

Humberstone-Beach

Skylark (3), House Sparrow (17), Herring Gull (17), Greenfinch (27), Great Black-Backed Gull (2), Curlew (6), Brent Goose Dark Bellied (20), Barnacle Goose (16), Golden Plover (277), Cormorant (2)

Middlemarsh Farm

Shoveler (12), Rook (120), Redshank (1), Pintail (3), Oystercatcher (40), Linnet (40), Kestrel (1), Herring Gull (873), Great Black-Backed Gull (2), Buzzard (1), Cormorant (41), Egyptian Goose (2), Gadwall (12), Wigeon (400)

Sutton on Sea

Common Scoter (4), Curlew (1), Great Black-Backed Gull (16), Herring Gull (65), Kestrel (1), Lapwing (45), Rook (100), Shelduck (2), Sanderling (1), Lesser Black- Backed Gull (4), Jackdaw (1), Cormorant (1)

Pyewipe/Grimsby Docks

Black-Tailed Godwit, Curlew, Dunlin, Kestrel, Lapwing (100), Great Black-Backed Gull, Herring Gull, Redshank, Shelduck, Shoveler, Starling (80), Canada Goose (2), Cormorant (1)

6/2/2025

Baston Garvel Pits

Redshank (10), Red-Crested Pochard (2), Oystercatcher (1), Lapwing (15), Whooper Swan (11), Cormorant (5), Tufted Duck (42), Greylag Goose (53)

Deeping Lakes

Greenfinch (50), Shoveler (20), Short-Eared Owl (1), Long-Eared Owl, Cormorant (18), Canada Goose (2), Greylag Goose (100), Dunnock (1), Cettis Warbler (1), Wigeon (17)

Huttoft Bank

Brent Goose-Dark-Bellied (1), Great Black-Backed Gull (1), Herring Gull, Red-Throated Diver (35), Shelduck (1), Sanderling (2), Black Headed Gill, Dunnock, Goldfinch

Covenham Reservoir



Goldeneye, Goosander, Great Crested Grebe, Herring Gull, Lapwing, Redshank, Shoveler, Skylark, Wigeon, Tufted Duck, Pied Wagtail, Grey Wagtail, Mute Swan

Sutton on Sea

Black Redstart (10), Brent Goose Dark Bellied (2), Curlew (1), Eider (1), Great Black-Backed Gull (7), Herring Gull (49), Oystercatcher (1), Red-necked Grebe (1), Red-Throated Diver (78), Rook (30), Shelduck (4), Little Egret (1), Pink-footed Goose (39), Greylag Goose (17)

Willow Tree Fen

Common Crane (15), Fieldfare (33), Lapwing (300), Shelduck (3), Whooper Swan (12), Marsh Harrier (3), Buzzard (1), Grey Heron (1), Little Egret (1), Wigeon (350)

North Shore Wall-Cleethorpes

Purple Sandpiper (1)

Messingham Sand Quarry

Shoveler (170), Shelduck (15), Redwing, Pochard (12), Lapwing, Great Spotted Woodpecker (1), Buzzard (1), Song Thrush (2), Marsh Harrier (1), Teal (3), Cormorant (6), Gadwall (39)

Far Ings Nature Reserve

Curlew, Dunlin, Goldeneye, Great Spotted Woodpecker, Redshank, Shelduck, Pochard, Redwing, Treecreeper, Red-Legged Partridge

Country Park Spilsby

Bullfinch (2), Rook (10), Yellowhammer (6), Treecreeper, Song Thrush (1), Coal Tit, Goldcrest, Chaffinch

Boultham Mere

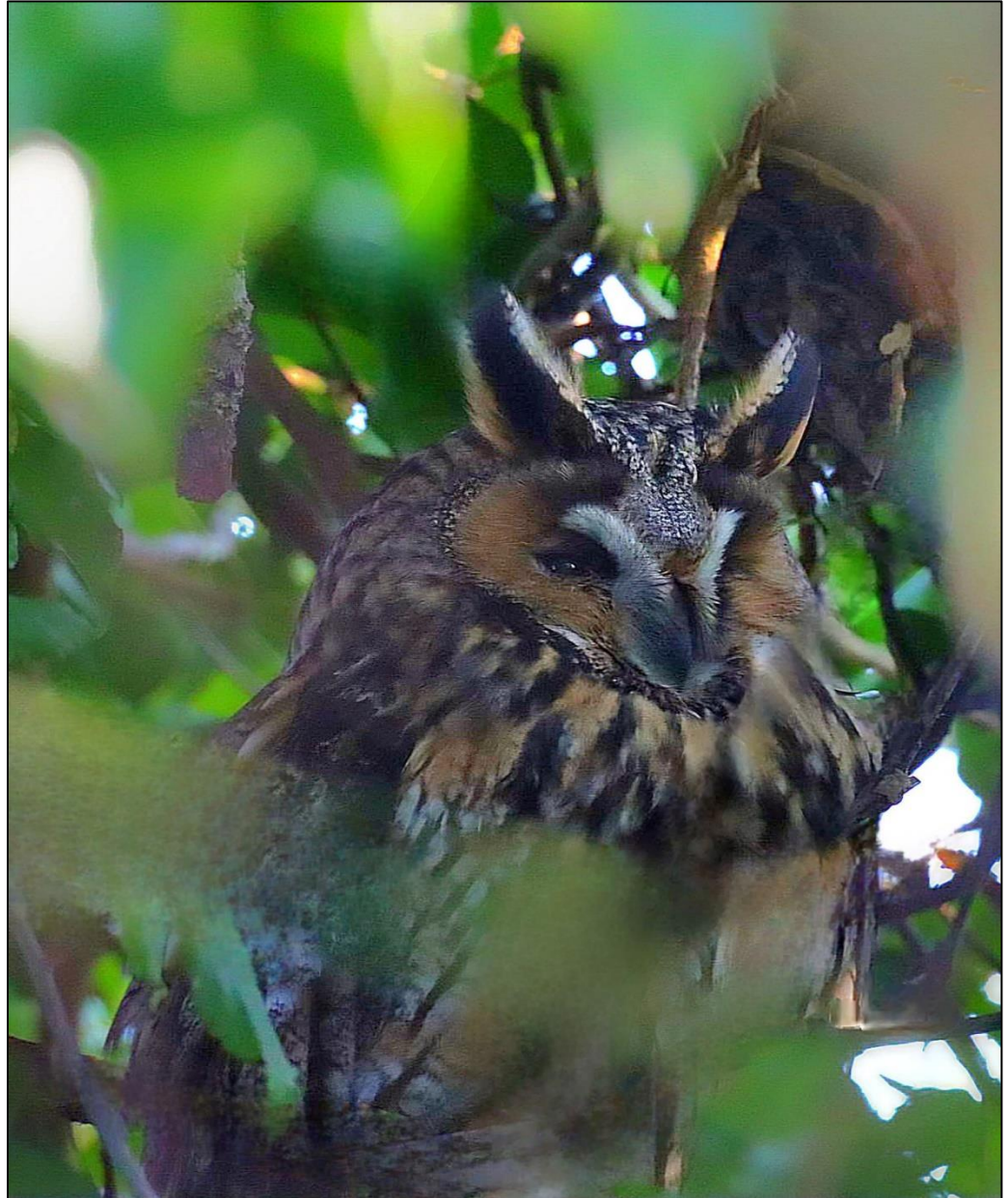
Whooper Swan (2), Water Rail (1), Shoveler (21), Redwing (3), Greenfinch (2), Pochard (2), Egyptian Goose (3), Dunnock (2), Gadwell (19)

RSPB Frampton Marsh

Black-Tailed Godwit, Goldeneye (2), Kestrel, Lapwing (250), Pintail (2), Pochard (2), Redshank, Ruff (6), Shelduck, Shoveler

Gibraltar Point

Black-Tailed Godwit (18), Curlew (32), Fieldfare (3), Great Spotted Woodpecker (2), Greenfinch (4), Kingfisher (1), Lapwing (300), Oystercatcher (4), Pintail (6), Redwing (3), Shelduck (18), Shoveler (35), Skylark (8), Stonechat (2), Water Rail (1), Pochard (2)



Long-eared Owl at Deeping Lakes LWT (roosting birds are naturally protected from disturbance, and capturing this type of image requires both a long lens and plenty of luck) © Stewart Wilson

5/2/2025

Winters Pond

Curlew (30), Black-Tailed Godwit (150), Redshank (50), Kestrel (1), Skylark (2), Fieldfare (2), Linnet (25), Yellowhammer (1)

Saltfleetby-Theddlethorpe Dunes NNR

Russian White-Fronted Goose (10)

Louth (St James Church)

Black Redstart

RSPB Frieston Shore

Spotted Redshank, Shoveler (6), Shelduck (1), Pintail (10), goldeneye (10), Oystercatcher (9), Lapwing (420), Curlew (82), Redshank (23), Dunlin (3), Peregrine Falcon (1), Skylark (2), Stonechat (1), Greenfinch (1), Linnet (12)

Marston Sewage Works

Stonechat, Red Kite (2), Marsh Harrier (1), Buzzard (2)

Tattershall (Sleaford Road)

Goosander (6), Great White Egret (2), Redshank (4), Egyptian Goose (4), Grey Heron (1), Little Egret (1), Little Grebe (1), Wigeon (17), Teal (2)

Anderby Marsh

Skylark (30), Shoveler, Shelduck (4), Rook (2), Redshank (3), Red-Throated Diver (38), Pintail (2), Lapwing (350), Kingfisher (1), Kestrel (1), Herring Gull, Greenfinch (1), Great Black-Backed Gull (2), Dunlin, Curlew, Gadwell (100), Golden Plover (1),

Dunnock, Marsh Harrier(1)

Deeping Lakes

Long-Eared Owl (2), Water Rail, Shoveler (1), Pochard, Great White Egret, Fieldfare, Goldeneye, Goosander (5), Great Spotted Woodpecker, Greenfinch, Kestrel, Kingfisher, Little Owl (1)

Woodhall Spa

Stonechat, Shelduck (3), Shoveler (12), Lapwing (40), Marsh Harrier, Buzzard, Green Woodpecker (1), Tufted Duck (20), Teal (30), Wigeon (300)

Tattershall Thorpe

Goldeneye (4), Lapwing (44), Redshank (2), Shelduck (1), Shoveler (3), Stonechat (1), Meadow Pipit (3), Teal (6), Tufted Duck (2), Wigeon (320), Cormorant (14), Coot (60)

Gibraltar Point

Black-Tailed Godwit (5), Brent Goose-Dark-Bellied (282), Curlew (25), Greenfinch (1), Lapwing (300), Linnet (30, Pintail (6), Pochard (2), Redshank (12), Rook (1), Shoveler (41), Skylark (20), Water Rail (1), Yellowhammer (1), Water Pipit (2), Rock Pipit (20), Woodpigeon (280), Tufted Duck (31), Teal (120)

Pyewipe/Grimsby Docks

Bar-Tailed Godwit, Black-Tailed Godwit, Curlew, Dunlin, Greenfinch (1), Kestrel, Herring Gull, Great Black-Backed Gull, Stonechat (1), Shelduck, Shoveler (3), Redshank, Lapwing (100), Sparrow Hawk (1), Little Egret (3), Golden Plover (2000), Tufted Duck (10), Wigeon (38), Teal (10)



Black Redstart at St James Church Louth © Roger Labbett

4/2/2025

Stantons Pits

Lapwing (2), Red Kite (2), Skylark (1)

Langtoft Gravel Pits

Ferruginous Duck (drake)- At West end GP this AM

Belton House/Park

Hawfinch (1)

Deeping Lakes

Long-eared Owl (4), Great White Egret (1), Kestrel (1), Greenfinch (1)

Toft Newton Reservoir

Fieldfare (2), Goldeneye (12), Great Crested Grebe (2), Lapwing (6), Kestrel (1), Red Kite (1), Redwing (4), Rook (50), Skylark (2), Yellowhammer (1), Lesser Black-Backed Gull (1), Green Woodpecker (1), Greylag Goose (2)

Gibraltar Point

Bar-Tailed Godwit (1), Black-Tailed Godwit (9), Brent Goose (7), Curlew (45), Eider (1), Great Crested Grebe (2), Great Black-Backed Gull (2), Herring Gull (50), Lapwing (8), Pintail (8), Red-Throated Diver (18), Shelduck (23), Shoveler (29), Turnstone (40), Woodcock (1), Sanderling (30), Little Grebe (14), Little Egret (3)

Cleethorpes Yacht Club

Ruddy Shelduck (4), Bar-Tailed Godwit (10), Brent Goose (35), Shelduck (23), Oystercatcher (150), Dunlin (300), Sanderling (150), Knot (400), Wigeon (100), Teal (100)

Louth

Great Spotted Woodpecker (3), Greenfinch (1), Rook, Nuthatch (3), Buzzard, Stock Dove, Mallard (35), Green Woodpecker (1)

Wolla Bank

Fulmar, Gannet, Red-Throated Diver, Shelduck

Lincolnshire CCP

Curlew (4), Dunlin (10), Fulmar (1), Gannet (1), Great Black-Backed Gull (4), Herring Gull (15), Kestrel (3), Lapwing (320), Pintail (1), Red-Throated Diver (8), Redshank (5), Water Pipit (1), Water Rail (2), Shelduck (30), Shoveler (20), Marsh Harrier (1), Pink footed Goose (1200), Sanderling (5)

RSPB Tetney Marsh

Ruddy Shelduck (6), Brent Goose (Dark-Bellied), Hen Harrier (2)

RSPB Frampton Marsh

Peregrine Falcon, Merlin, Dunlin, Goldeneye, Stonechat, Yellowhammer, Great Egret, Great Crested Grebe, Brent Goose, Whooper Swan, Shelduck, Pintail, Herring Gull, Redshank, Ruff, Black-Tailed Godwit, Curlew, Lapwing, Linnet, Knot, Wigeon, Gadwell, Greylag Goose

3/2/2025

Donna Nook

Brant Goose (17), Whooper Swan (3), Shelduck (49), Oystercatcher (6), Black-Bellied Plover (4), Curlew (3), Bar-Tailed Godwit (23), Skylark (1), Linnet (28), Herring Gull (4), Marsh Harrier (1)

Norvartis Ings

Caspian Gull, Shoveler (4), Shelduck (5), Lapwing (440), Curlew (94), Black-Tailed Godwit (810), Redshank (22), Dunlin (190), Herring Gull (94), Great Black-Backed Gull (3), Kestrel (1), Linnet, Stonechat, Skylark

Cleethorpes Country Park

Kingfisher, Black-Tailed Godwit

Baston Fen

Whooper Swan (134), Kestrel (1), Great White Egret (1), Greylag Goose (200), Cormorant (1), Moorhen (18)

Far Ings Nature Reserve

Curlew (10), Goldeneye (2), Great Black-Backed Gull (1), Marsh Harrier (2), Tufted Duck (7), Wigeon (12), Gadwell (2), Dunnock (2)

Alkborough Flats

Barnacle Goose, Curlew (20), Goldeneye, Lapwing, Kestrel, Pintail, Redshank, Rook, Shoveler, Shelduck, Stonechat, Snipe, Pink-footed Goose, Lesser Black-Backed Gull

Sutton On Sea

Red-necked Grebe (1), Linnet

Saltfleetby-Theddlethorpe Dunes NNR

Russian White-Fronted Goose (10)

RSPB Frampton Marsh

Whooper Swan (512), Berwick Swan (10), Eider (20), Red-Breasted Merganser (8), Marsh Harrier (1), Merlin (1), Hen Harrier (1), Buzzard (1)

RSPB Frieston Shore

Whooper Swan (274), Bewick Swan (4)

Deeping Lakes

Long-Eared Owl (4), Cattle Egret (3)

Gibraltar Point

Bar-Tailed Godwit (1), Black-Tailed Godwit (1), Brent Goose, Common Scoter (7), Curlew, Dunlin (2), Eider (2), Great Crested Grebe (1), Great Northern Diver (2), Greenfinch (4), Herring Gull (100), Lapwing, Linnet (20), Merlin (1), Oystercatcher, Pintail, Redwing (2), Red-Breasted Merganser (2), Red-Throated Diver (16), Skylark, Stonechat (2), Redshank, Shoveler, Shelduck (1), Turnstone (5), Whooper Swan (34), Water Rail (2), Unidentified Diver (1), Cormorant (112), Barn Owl (1), Marsh Harrier (1), Water Pipit

Pyewipe/Grimsby Docks

Bar-Tailed Godwit, Black-Tailed Godwit, Curlew, Dunlin, Great Black-Backed Gull, Herring Gull, Lapwing (200), Redshank, Shelduck, Shoveler (6), Stonechat (1), Wigeon (90), Little Egret (2), Greylag Goose (11), Grey Plover, Golden Plover (2000), Gadwell (14), Grey Heron (1)

Boultham Mere

Whooper Swan (3), Shoveler (17), Water Rail (1), Herring Gull (2), Great White Egret (1), Great Spotted Woodpecker (1), Kestrel (1), Rook, Redwing (11), Stonechat (2), Greenfinch (3), Redpoll (1), Teal (31), Gadwell (7), Dunnock (3), Wren (2), Egyptian Goose (3), Jay (1)

River Bain-Tattershall

Greenfinch (1), Rook (6), Kestrel (1), Little Egret (1), Cormorant (1), Black-headed Gull (1), Jackdaw (3)

2/2/2025

Wolla Bank

Common Scoter, Red-Throated Diver

North Wall Beach

Snow Bunting (3)

RSPB Tetney Marsh

Ruddy Shelduck (4), Brent Goose

Cleethorpes Country Park

Bullfinch, Greenfinch, Herring Gull, Linnet, Skylark, Water Rail, Sparrowhawk, Buzzard, Lesser Black-Backed Gull

Huttoft Bank

White-fronted Goose (12), Curlew, Kestrel (1), Herring Gull, Skylark, Pink-footed Goose (900)

Anderby Creek

Black-Tailed Godwit (6), Dunlin (14), Curlew, Eider (1), Great Black-Backed Gull (3), Kestrel (1), Lapwing, Redshank (9), Rook, Shelduck (3), Short-eared Owl (1), Shoveler

Welland Bank Pits

Cattle Egret (1), Goldeneye (6), Goosander (3), Great Crested Grebe, Little Owl (1), Shoveler, Pochard, Marsh Harrier, Teal, Tufted Duck

Cleethorpes Golf Course

Siskin (5), Barnacle Goose (12)

Cleethorpes Mudflats

Stonechat, Brent Goose (120)

Gooseman Fields (Peaks Parkway)

Bullfinch (20), Kestrel (1), Linnet (20), Reed Bunting (1), Song Thrush (1)

Toft Newton Reservoir

Fieldfare (20), Goldeneye (7), Great Crested Grebe (3), Greenfinch (3), Kestrel (1), Linnet (10), Rook (10), Skylark (4), Little Grebe (15), Jackdaw (18), Pied Wagtail (2)

Humber Bank

Curlew (43), Kestrel (1), Herring Gull, Turnstone (2), Gadwell (3), Grey Plover (1), Grey Heron (1)

Witham View (Short Ferry)

Goosander, Kestrel, Kingfisher, Whooper Swan (3), Little Egret, Grey Heron

Deeping Lakes

Cattle Egret (1), Great White Egret (1), Kestrel, Goosander (1), Red Kite (1), Rook, Shoveler, Skylark, Water Rail, Long-eared Owl (4), Egyptian Goose (2), Gadwell, Little Egret, Little Grebe



Stonechat behind the chalets near Cleethorpes Mudflats © Jim Wright



Barnacle Geese on Cleethorpes Golf Course © Jim Wright

1/2/2025

Sutton On Sea

Red-necked Grebe, Yellowhammer (1), Shelduck (8), Herring Gull (9), Great Black-Backed Gull (3), Curlew (28), Common Scoter (1), Pink-footed Goose (170)

Marston STW

Curlew (9), Water Rail (1), Fieldfare (20), Rook (1), Pink-footed Goose (1), Greylag Goose (180), Goldfinch (1), Green Woodpecker (1), Red-Legged Partridge (2)

Nocton Fen

Common Crane (7) - Flew off towards Branston Fen

Deeping Lakes

Glossy Ibis (2), Long-eared Owl (3)

Cleethorpes Country Park

Curlew (1), Great Crested Grebe (1), Greenfinch (10), Linnet (3), Herring Gull, Water Rail (1), Mute Swan (2), Little Egret (1)

Bourne South Fen

Bewicks Swan (2), Fieldfare, Skylark (3), Whooper Swan (138), Marsh Harrier (1)

Tetney Marsh/Beach

Great White Egret, Ruddy Shelduck (4)

Alkborough Flats

Bittern (1), Curlew, Lapwing (22), Herring Gull, Pintail (1), Rook (10), Shelduck (30), Shoveler (16), Stonechat (2), Teal (130), Wigeon (200), Greylag Goose (2), Golden Plover (20)

Anderby Creek

Black-Tailed Godwit (5), Curlew (34), Dunlin, Great Black-Backed Gull (1), Kingfisher (1), Lapwing (400), Red-Throated Diver (1), Redshank, Rook, Shoveler, Shelduck, Sanderling, Little Egret, Pink-footed Goose (35), Moorhen (10)

Huttoft Bank

Caspian Gull (1), Fieldfare (1), Kestrel (1), White-fronted Goose (14), Yellowhammer (2), Golden Plover (60), Pink-footed Goose (450), Tundra Bean Goose (1)

Winters Pond

Barnacle Goose, Curlew, Goldeneye, Lapwing, Pochard, Shoveler, Water Pipit, Buzzard, Dunnock, Tufted Duck, Collard Dove, Gadwell

Trent Port

Bullfinch (4), Greenfinch (1), Stonechat (1), Fieldfare (10), Redwing (66), Rook (160)

Baston Fen

Tundra Swan (2), Whooper Swan (90), Lapwing (80), Red Kite (1), Kestrel (1), Rook (30), Great Spotted Woodpecker (1), Redwing (15), Fieldfare (50), Greenfinch (5)

RSPB Frampton Marsh

Ruff (1), Curlew (3), Peregrine Falcon (1), Skylark (30), Stonechat (2), Black-Tailed Godwit (2), Shelduck (2), Shoveler (2), Brant Geese, Pintail (4)



Common Cranes at Nocton Fen © Russell Hayes

Lincs Bird Club Website

Website: <http://www.lincsbirdclub.co.uk>

Twitter [@Lincsbirding](#)

Facebook:

<https://www.facebook.com/LincolnshireBirdInformation/>

LBC County Bird Recorder

Phil Hyde recorder_south@lincsbirdclub.co.uk

BTO - <https://www.bto.org>

RSPB - <https://www.rspb.org.uk/>

Birdguides - <https://www.birdguides.com/>

Rarebird Alert - <https://www.rarebirdalert.co.uk/>

Recording

BTO Birdtrack - <https://app.bto.org/birdtrack/login/login.jsp>

eBird - <https://ebird.org/home>

iRecord - <https://www.brc.ac.uk/irecord/>

Nature Lister - <http://www.naturelister.co.uk>

Wildlife Recorder - <https://www.wildlife.co.uk>

Lincolnshire Naturalists' Union Website

<http://lnu.org/>

LNU e-mail: info@lnu.org

Love Lincs Plants [https://www.lincstrust.org.uk/what-we-](https://www.lincstrust.org.uk/what-we-do/love-lincs-plants)

[do/love-lincs-plants](https://www.lincstrust.org.uk/what-we-do/love-lincs-plants) Love Lincs Plants Twitter feed

[@LoveLincsPlants](#)

Sir Joseph Banks Society

<http://www.joseph-banks.org.uk>

enquiries@joseph-banks.org.uk

Lincolnshire Wildlife Trust

<http://www.lincstrust.org.uk/>

Lincolnshire Bat Group website

<http://www.lincsbatgroup.co.uk/>

Butterfly Conservation Lincolnshire Branch

<http://butterfly-conservation.org/300/lincolnshire-branch.html>

FIGHTING WILDLIFE CRIME

Rural Crime Officer

Pc 160 Nick Willey

Force Wildlife, Rural Crime Officer

Force Dog Training Establishment

Lincolnshire Showground.

Grange-De-Lings.

Lincoln

nicholas.willey@lincs.pnn.police.uk

OFFICE: 01522-731897

MOBILE :07768-501895

PAGER : 07654-330877

Rural Crime News - <https://www.lincs.police.uk/news-campaigns/news/2019/rural-crime-news/>

STAYING SAFE

EasyTide

<http://easytide.ukho.gov.uk/EasyTide/EasyTide/index.aspx>

Met Office Severe Weather E-mail Service

<http://www.metoffice.gov.uk/about-us/guide-to-emails>

Environment Agency Flood Information/Floodline

<http://www.environment-agency.gov.uk/default.aspx>

Lyme Disease

<https://www.nhs.uk/conditions/lyme-disease/>

SPECIES IDENTIFICATION AND RECORDING

Botany

Botanical Group in South Lincs

Contact: Sarah Lambert - sarah.lambert7@ntlworld.com

Also see: <http://bsbi.org/south-lincolnshire-v-c-53>

LNU Sawflies, Bees, Wasps and Ants Recorder

Dr. David Sheppard - d.a.sheppard@btinternet.com

Lincolnshire Mammals

Chris Manning, Chris.LincsDeer@gmail.com

Mammal Atlas

You can download and print off a hard copy or view it online.

[http://www.glnp.org.uk/our-](http://www.glnp.org.uk/our-publications/biodiversity/projects-and-reports.php)

[publications/biodiversity/projects-and-reports.php](http://www.glnp.org.uk/our-publications/biodiversity/projects-and-reports.php)

Lincs Amphibian and Reptile Group

The Lincolnshire ARG (Amphibian & Reptile Group)

Ashley Butterfield - learningoutdoors@btinternet.com

Local Bat Helpline

Grounded bats, bat problems, advice and information.

Contact Annette and Colin Faulkner on

01775 766286 or e-mail: annettefaulkner@btinternet.com

Confidential Bat Records

You may send confidential bat records direct to Annette

Faulkner on: annettefaulkner@btinternet.com

USEFUL WILDLIFE CONTACTS

Greater Lincolnshire Nature Partnership

<http://www.glnp.org.uk/>

Contact: charlie.barnes@glnp.org.uk

or for more general queries:info@glnp.org.uk

Natural England

<http://www.naturalengland.org.uk/>

Lincolnshire Environmental Awards

www.lincsenvironmentalawards.org.uk

Life on the Verge and Wildflower Meadow Network Project

<http://www.lifeontheverge.org.uk/>



Lincolnshire Bird Club
Follow us on twitter @lincsbirdclub
<http://www.lincsbirdclub.co.uk>

The Lincolnshire Bird Club, supporting the recording & conservation of wildlife in Lincolnshire

